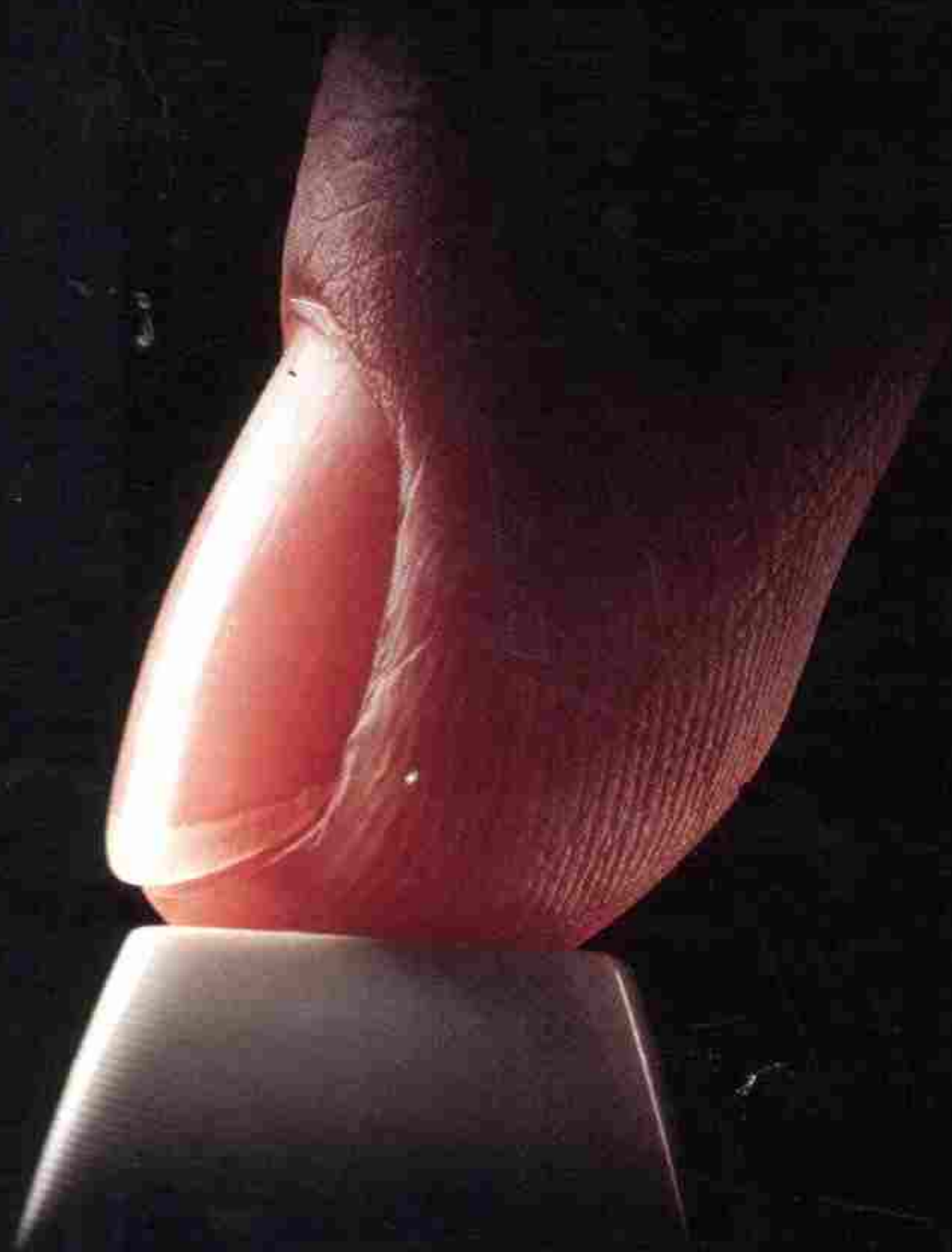


In touch with Tomorrow.



MATTEL ELECTRONICS®

MATTEL ELECTRONICS

NEWS RELEASE

TRADE PRESS
CONTACT:

Kathy Kennedy
MATTEL ELECTRONICS
Mail Stop 302-14
(213) 978-3244

CONSUMER PRESS
CONTACT:

Tobi Nyberg/Holli Schiavelli
Mattel Electronics Media
Information Bureau
5900 Wilshire Blvd.
Suite 3140
Los Angeles, CA 90036
800-MATTEL-2 (in Calif.)
800-MATTEL-8 (outside Calif.)

FOR IMMEDIATE RELEASE

WHAT'S YOUR GAME? WE'VE GOT IT AT MATTEL ELECTRONICS!

Whatever's your game-- arcade, cartoon, action, sports, strategy, gaming or children's learning-- Mattel Electronics makes it for the Intellivision master component. With 21 new titles for 1983, the company now offers a library of over 50 unique and distinct Intellivision cartridges.

"Many of the 1983 titles are especially unique due to a programming breakthrough known as "SuperGraphics." Mattel Electronics programmers have developed new ways to further maximize the Intellivision graphic capabilities," explained Peter Pirner, senior vice president of marketing for Mattel Electronics.

In addition to "SuperGraphics," variety is a key emphasis for Mattel Electronics software. "Just as various kinds of music appeal to diverse audiences, certain types of video games interest different people," noted Pirner. "That's why Mattel Electronics creates games to entertain the whole family as well as cartridges geared for specific market groups."

(more)

WHAT'S YOUR GAME? WE'VE GOT IT AT MATTEL ELECTRONICS!
2-2-2-2

The arcade fan, for example, can play the hits without ever leaving the comforts of his livingroom. Chart-breakers like BURGERTIME, BUMP 'N' JUMP, MISSION X, and LOCK 'N' CHASE are just a few of the arcade greats available for the Intellivision. Nothing's missing in the action arena, either, with colorful graphics, exciting game plays and lots of wacky characters.

Parents and kids will enjoy Mattel Electronics' new line of cartoon and licensed video games. Afterall, who can resist winning alongside HE-MAN in MASTERS OF THE UNIVERSE, or helping ROCKY AND BULLWINKLE outsmart Boris and Natasha in their attempt to snatch priceless valuables? You'll even be able to quench your thirst for adventure with a game starring General Foods' lovable KOOL-AID PITCHER MAN.

The thrill seeker will never be bored with Intellivision's action-packed games. Hunt hidden treasures, explore secret mountains, face mysterious monsters and much more in cartridges such as ADVANCED DUNGEONS & DRAGONS^{TM*} TREASURE OF TARMIN^{TM*} Cartridge and MYSTIC CASTLE.

Want to play ball with the pros? Intellivision's new ALL-STAR MAJOR LEAGUE BASEBALL gives you the option of competing against the computer or a friend. It's so true-to-life you can catch fly balls and grounders, steal bases, and even kick up a cloud of dust as you slide into base. There's also the new MOTOCROSS, NFL FOOTBALL, PBA BOWLING, U.S. SKI TEAM SKIING, TENNIS, PGA GOLF, NHL HOCKEY, NASL SOCCER.... so no matter what the season, your sport is available on Intellivision.

(more)

WHAT'S YOUR GAME? WE'VE GOT IT AT MATTEL ELECTRONICS!
3-3-3-3

If you prefer more thought-provoking exercises, Mattel Electronics Intellivision has a variety of strategy cartridges, too. USCF CHESS, for example, provides different levels of difficulty so you'll never be matchless in a game of wits. Challenge a friend or the computer, or pick-up tips from the computer as it plays out the game for you.

With a number of gaming cartridges to choose from, true card lovers will find the best game in town on the Intellivision master component. In ROYAL DEALER, the computer has all the cards shuffled for everything from rummy to crazy eights.

Learning becomes a colorful game with two cartridges developed in conjunction with the Children's Television Workshop. THE ELECTRIC COMPANY WORD FUN and THE ELECTRIC COMPANY MATH FUN help the kids with their "p's & q's" as they race gorillas and monkeys against the clock or another player.

Intellivision titles for 1983 include: BURGERTIME, BUMP 'N' JUMP, ADVANCED DUNGEONS AND DRAGONS^{TM*} TREASURE OF TARMIN^{TM*} Cartridge, MASTERS OF THE UNIVERSE, MISSION X, LOCO-MOTION, KOOL-AID MAN, ROCKY AND BULLWINKLE, ALL-STAR MAJOR LEAGUE BASEBALL, THIN ICE, BUZZ BOMBERS, PINBALL, MOTOCROSS, MYSTIC CASTLE, VECTRON, SHARP SHOT, SHARK! SHARK!, TRON SOLAR SAILER, TRON MAZE-A-TRON, USCF CHESS and ROYAL DEALER.

Lastly, Pirner said that popular demand for quality game play has inspired Mattel Electronics to provide favorite Intellivision titles for their own Aquarius Home Computer System as well as the Atari 2600 and the IBM PC and Apple II Personal Computers. Games like BurgerTime and Lock 'N' Chase will come to life on all five systems.

WHAT'S YOUR GAME? WE'VE GOT IT AT MATTEL ELECTRONICS!
4-4-4-4

Mattel Electronics, Inc., based in Hawthorne, California Inc., is a subsidiary of Mattel, Inc. and the manufacturer of fine-quality electronic products including the Aquarius Home Computer Systems, the Intellivision Entertainment Computer System, M Network entertainment software as well as portable electronic products including Synsonics Drums.

*ADVANCED DUNGEONS & DRAGONS and TREASURE OF TARMIN are trademarks owned by and used under license from TSR Hobbies, Inc. This Cartridge is approved by TSR Hobbies, Inc., the publisher of the 'Fantasy Role-Playing Games' sold under the trademark ADVANCED DUNGEONS & DRAGONS®. © 1982 TSR Hobbies, Inc. All Rights Reserved.

#

0444M

MATTEL ELECTRONICS

NEWS RELEASE

TRADE PRESS

CONTACT:

Kathy Kennedy
MATTEL ELECTRONICS
Mail Stop 302-14
(213) 978-3244

CONSUMER PRESS

CONTACT:

Tobi Nyberg/Holli Schiavelli
Mattel Electronics Media
Information Bureau
5900 Wilshire Blvd.
Suite 3140
Los Angeles, CA 90036
800-MATTEL-2 (in Calif.)
800-MATTEL-8 (outside Calif.)

FOR IMMEDIATE RELEASE

MATTEL ELECTRONICS MAXIMIZES PROGRAMMING CAPABILITIES
WITH NEW INTELLIVISION "SUPERGRAPHICS" BREAKTHROUGH

First there were the realistic graphics of running men in INTELLIVISION video games such as MAJOR LEAGUE BASEBALL and NIGHT STALKER. The next step was brilliant graphics and three-dimensional effects in titles like STAR STRIKE and TRON SOLAR SAILER. The breakthroughs continue at Mattel Electronics with "SuperGraphics," a cartridge programming technique that further maximizes the graphic capabilities of Intellivision.

"SuperGraphics is made possible by the new and exclusive Mattel Electronics Graphics Development System, the GDS-7809," explained Peter Pirner, senior vice president of marketing for Mattel Electronics. "This new technique brings added realism, clarity and action to our video games," he added.

New Intellivision cartridge releases will benefit from the numerous product advantages of SuperGraphics. All characters will have high-resolution definition while moving objects can be many different

MATTEL ELECTRONICS MAXIMIZES PROGRAMMING CAPABILITIES
WITH NEW INTELLIVISION "SUPERGRAPHICS" BREAKTHROUGH
2-2-2-2

In addition, new Intellivision video games will feature multiple game play screens such as the seven different mazes in Intellivision BURGERTIME. Other new benefits include animated title screens, a unique scrolling playfield feature and more diverse colors.

The titles that have benefited from the Mattel Electronics SuperGraphics technique include BURGERTIME, PINBALL, MASTERS OF THE UNIVERSE, MOTOCROSS, MYSTIC CASTLE, MISSION X, THIN ICE and BUZZ BOMBERS. The SuperGraphics technique is also being applied to M NETWORK games by Mattel Electronics for the Atari VCS beginning with the title, IN SEARCH OF THE GOLDEN SKULL.

"This programming breakthrough allows Mattel Electronics to continue to be a leader in generating brilliant graphics and challenging game play in the 80's," concluded Pirner.

Mattel Electronics, Inc., based in Hawthorne, California, is a subsidiary of Mattel, Inc., and the manufacturer of fine-quality electronic products including the Aquarius Home Computer Systems, the Intellivision Entertainment Computer System, M Network entertainment software as well as portable electronic products including Synsonics Drums.

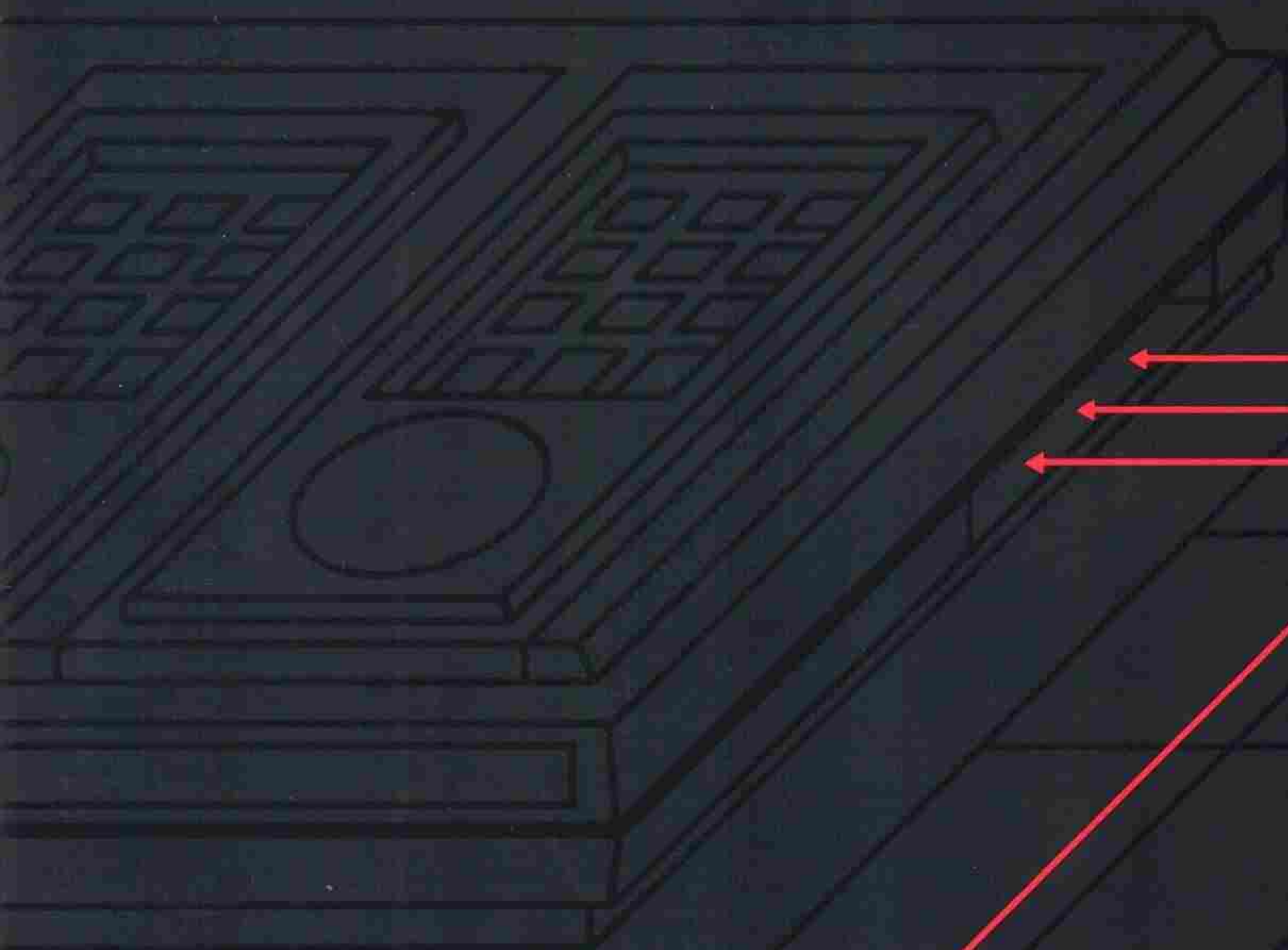
#

0444M

IntelliVision®

***THE ENTERTAINMENT COMPUTER
SYSTEM***

THE RIGHT CONNECTIONS™

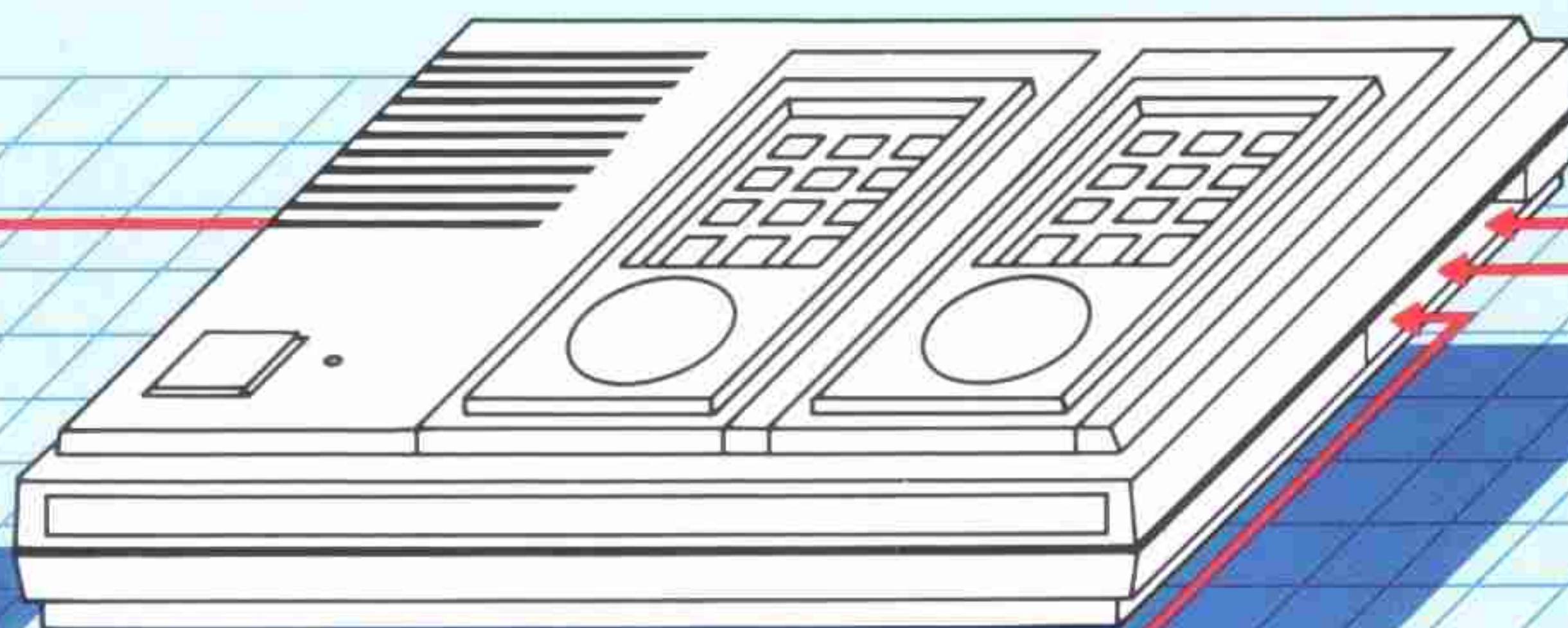
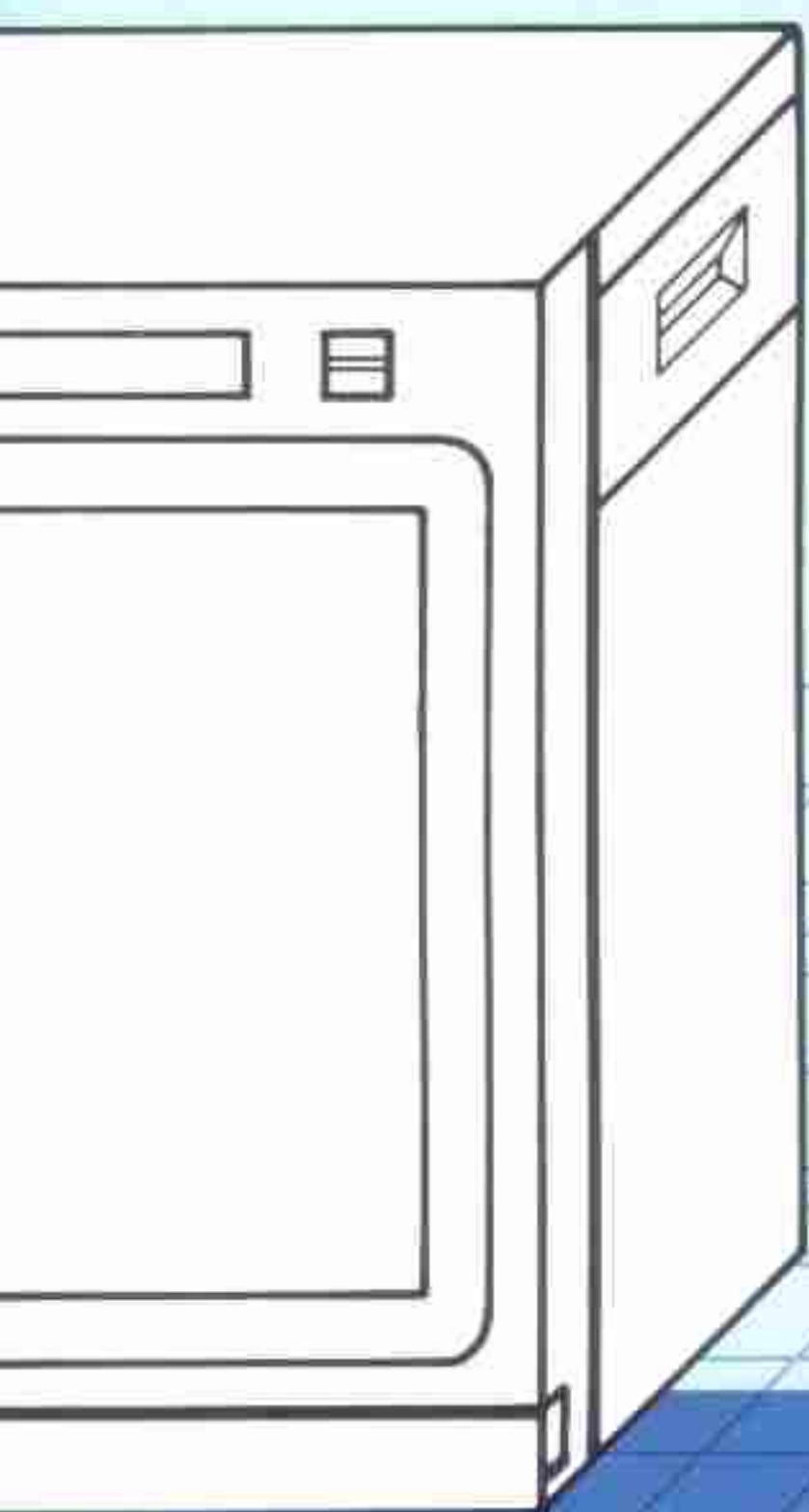


MATTEL ELECTRONICS

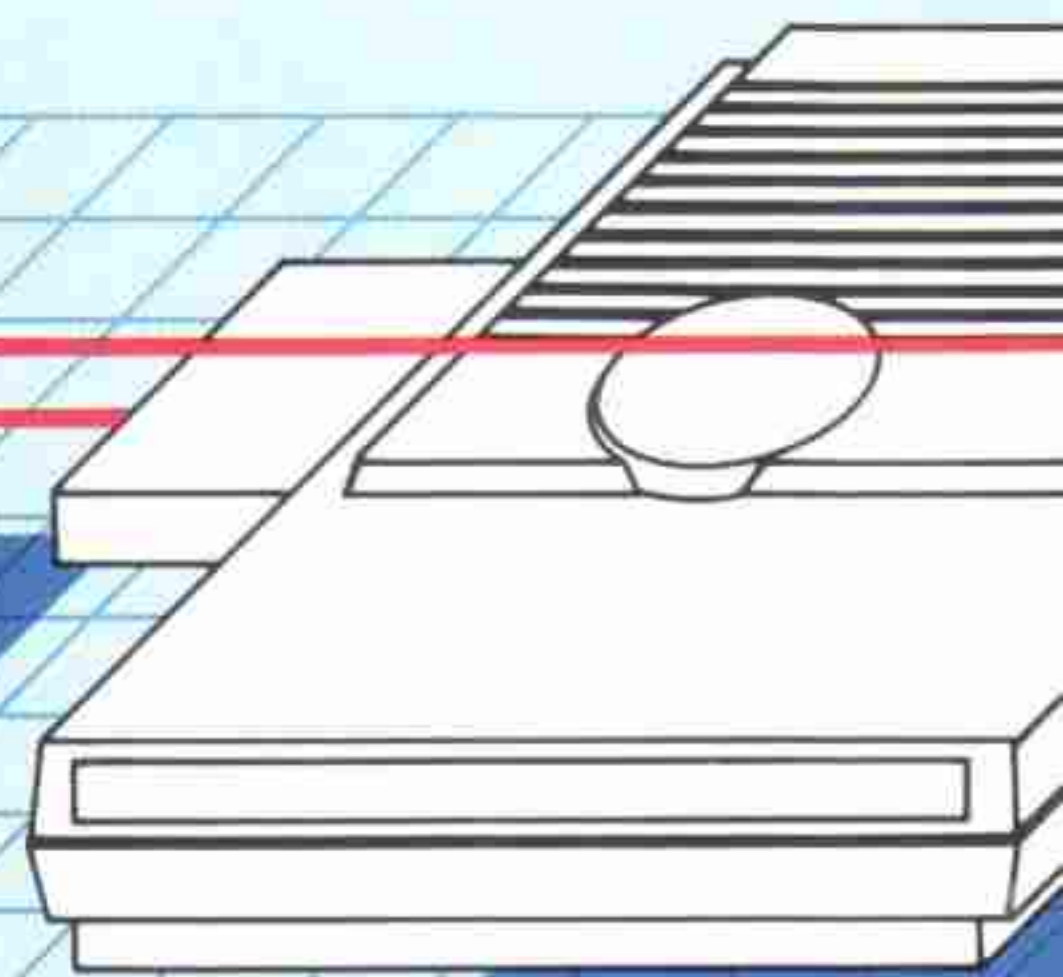
MATTEL ELECTRONICS®

Intellivision®

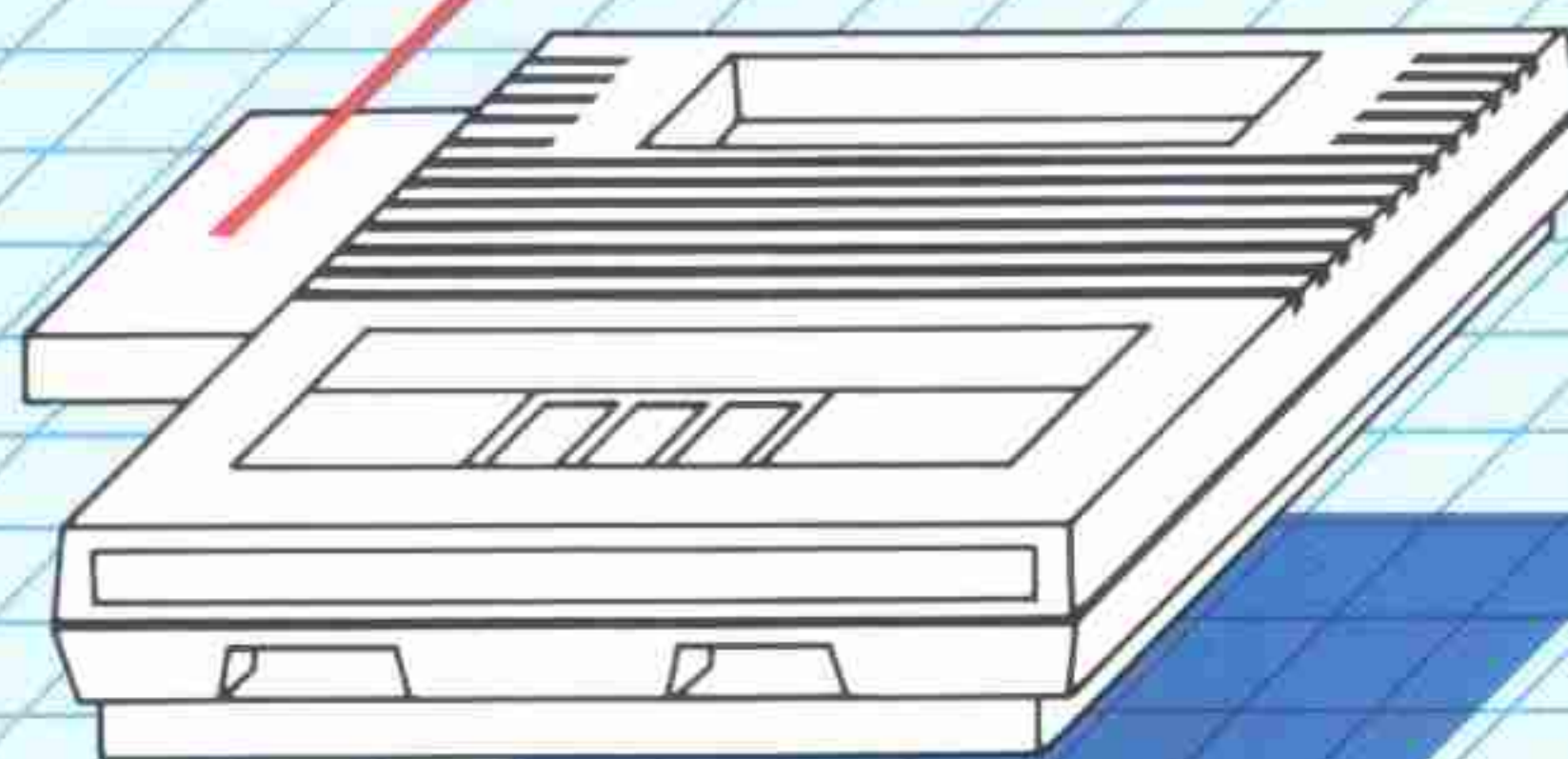
THE ENTERTAINMENT



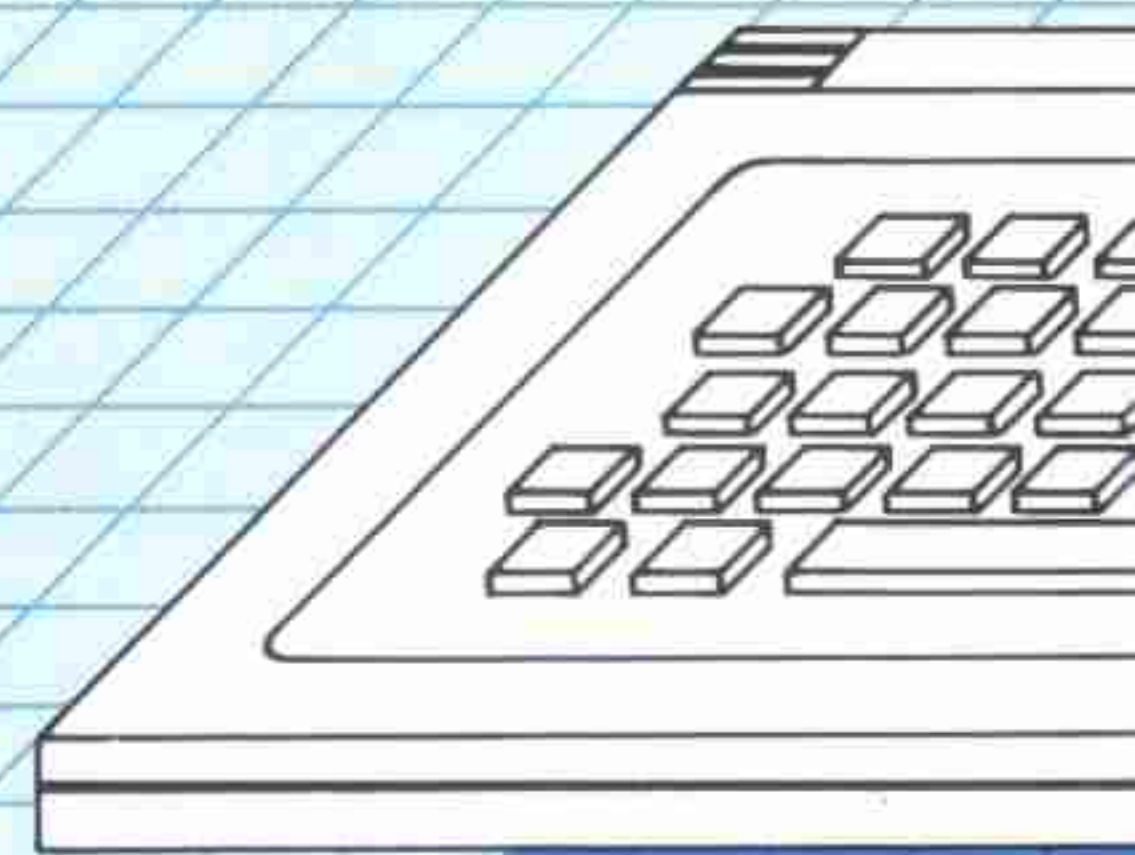
1. INTELLIVISION® II MASTER COMPONENT



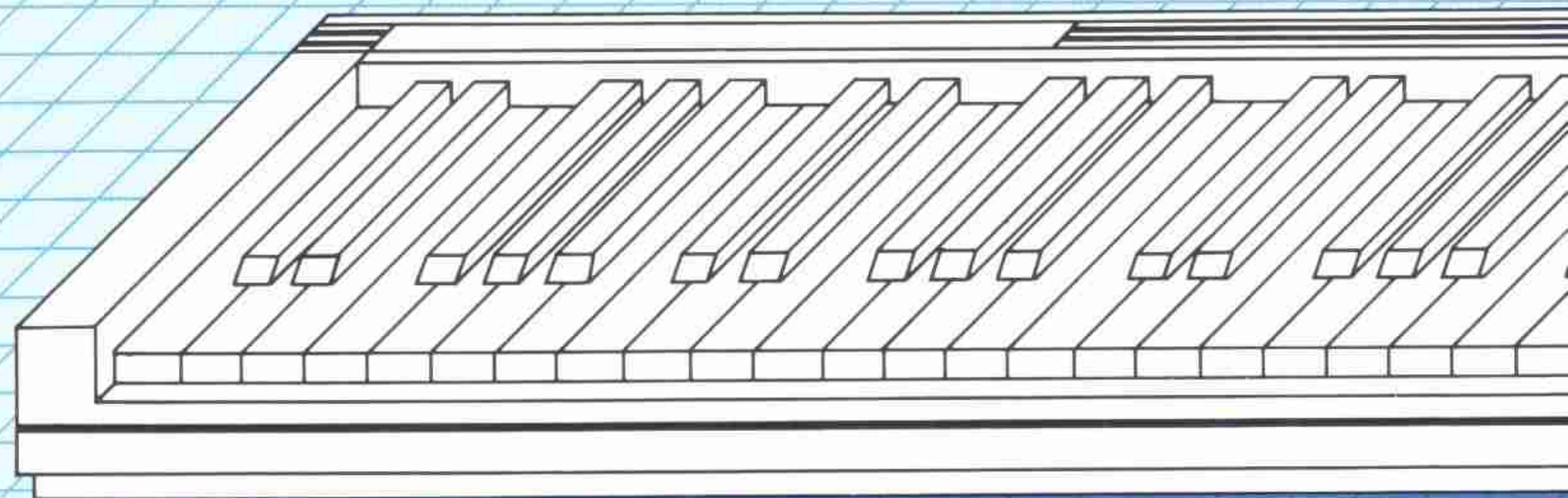
2. INTELLIVOICE™ VOICE
SYNTHESIS MODULE



3. INTELLIVISION SYSTEM CHANGER



5. INTELLIVISION COMPUTER KEYBOARD



6. INTELLIVISION MUSIC SYNTHESIZER

ENT COMPUTER SYSTEM

THE RIGHT CONNECTIONS™

1. THE MASTER CONNECTION (INTELLIVISION® II MASTER COMPONENT)

The completely restyled and improved Intellivision II Master Component. It's smaller, lighter and more streamlined than its predecessor. With refinements like a single on/off/reset button and longer hand controller cords for extra convenience. Still the same great graphic and game play capability. But now, your Intellivision Master Component or Intellivision II Master Component is the cornerstone connection to a whole world of home video entertainment.

2. THE VOICE CONNECTION (INTELLIVOICE™ VOICE SYNTHESIS MODULE)

The Intellivoice Voice Synthesis Module. You've got to hear it to believe it. When used in conjunction with the master component, the Intellivoice connection lets the game play take on a new dimension with the sound of the human voice. Not just a special effect but exciting commands and information that are an integral part of these more sophisticated games. Shown is restyled prototype for Intellivision II—Not available in 1983.

3. THE GAME CONNECTION (INTELLIVISION SYSTEM CHANGER)

The Intellivision System Changer connects directly to the Intellivision Master Component to accept Atari® 2600 compatible cartridges. Now Intellivision owners can play more video games than on any other system. Original Intellivision® Model #2609 requires factory modification at owner's expense.

4. INTELLIVISION COMPUTER ADAPTOR

It's the smartest thing next to the Intellivision Master Component: The Intellivision Computer Adaptor. Featuring the simple BASIC program language built right in and a 2K RAM memory. When used with the music synthesizer or the computer keyboard, the computer adaptor turns Intellivision into a fun family computer.

5. THE COMPUTER CONNECTION (INTELLIVISION COMPUTER KEYBOARD)

Just plug the Computer Keyboard into the Intellivision Computer Adaptor and the Intellivision Master Component and you've got the power of a home computer system. It's fully programmable, with the simple BASIC Language already built in and 49 alpha numeric input keys. With the Computer Keyboard at your fingertips learning can be as much fun as a game.

6. THE MUSIC CONNECTION (INTELLIVISION MUSIC SYNTHESIZER)

Learning and playing music can now be as fun and easy as playing a video game. And that's exactly what the Intellivision Music Synthesizer is all about. Together with the Intellivision Computer Adaptor and Master Component, the Keyboard becomes a six-note, polyphonic synthesizer. Learn to read music, compose your own melodies... in no time.

THE SOFTWARE CONNECTION

1 MASTER CONNECTION

The Intellivision Master Component provides a world of exciting home entertainment with a constantly growing list of software titles. There's a varied selection of arcade games, space games, action games, strategy games and educational games and a complete line-up of Sports games. All with the superior graphics and captivating game play that has made Intellivision the name of the game.

2 VOICE CONNECTION

The added thrill of simulated human voices barking commands, warnings and status reports adds a new level of enjoyment to video game play.

3 GAME CONNECTION

The Intellivision System Changer gives you more to play with. Our new system changer lets you play Atari® 2600 compatible games, plus all other sophisticated Intellivision® games. More games than any other system.

4 COMPUTER ADAPTOR

The Computer Adaptor opens the door to a whole new world of computer software from Mattel Electronics. When plugged into the Intellivision Master Component, it operates the computer keyboard and the music synthesizer.

5 COMPUTER CONNECTION

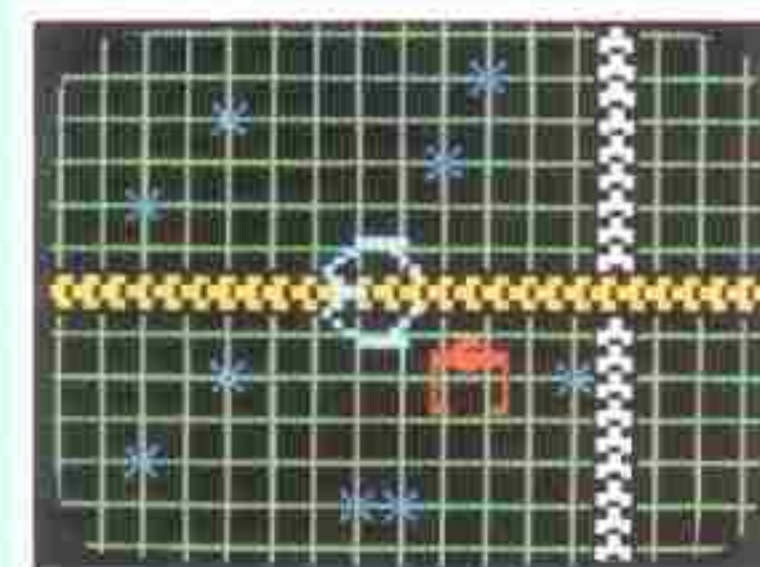
When it comes to software, Mattel Electronics is way ahead of the game. Introducing computer software for the Intellivision Computer Keyboard Entertainment Computer System. Choose from a variety of super video games, fun computer programming games, and entertaining, educational games. And every one is user modifiable. So you can make them as easy or as difficult as you want. They are easy to use and most of all they make computing fun for the whole family.

6 MUSIC CONNECTION

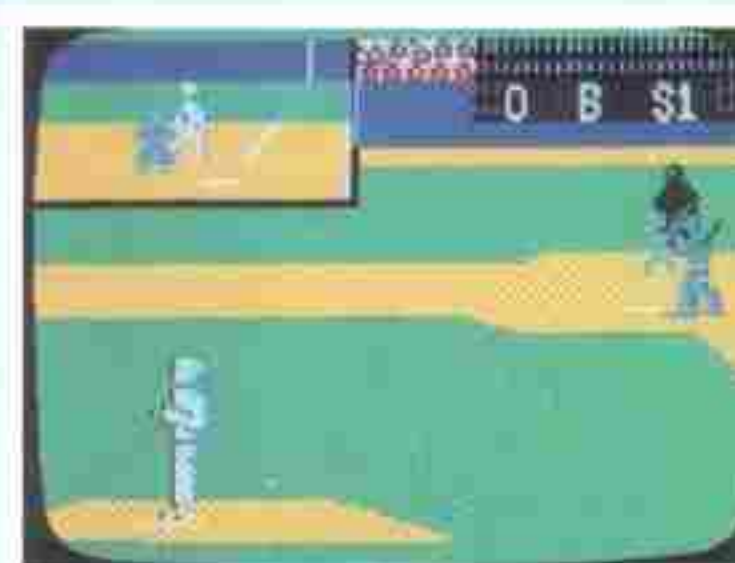
Compose your own melodies right before your eyes. The Intellivision Music Synthesizer makes music fun. You can conduct, play along with selected songs or learn music theory. In fact, even practice is fun with the Intellivision Music Synthesizer.



BURGERTIME™**
4549



TRON Solar Sailer™***
5393



WORLD SERIES† BASEBALL
4537



™MR. BASIC MEETS "BITS 'N BITES"



THE JETSONS †† WAYS WITH WORDS
4543



MELODY BLASTER™
4540



SONG WRITER™
4542

*Trademark of Atari Inc.

**BURGERTIME is a trademark of DATA EAST USA, INC. used under license. © 1982 DATA EAST, INC.

***TRON Solar Sailer is a trademark owned by and used under license from Walt Disney Productions. © 1982 Walt Disney Productions.

†Trademark used under license from Major League Baseball Promotion Corp.

††© 1983 Hanna-Barbera Productions, Inc.

MATTEL ELECTRONICS

NEWS RELEASE

TRADE PRESS
CONTACT:

Kathy Kennedy
MATTEL ELECTRONICS
Mail Stop 302-14
(213) 978-3244

CONSUMER PRESS
CONTACT:

Tobi Nyberg/Holli Schiavelli
Mattel Electronics Media
Information Bureau
5900 Wilshire Blvd.
Suite 3140
Los Angeles, CA 90036
800-MATTEL-2 (in Calif.)
800-MATTEL-8 (outside Calif.)

FOR IMMEDIATE RELEASE

INTELLIVISION ENTERTAINMENT COMPUTER SYSTEM OFFERS ALL THE RIGHT CONNECTIONS

Whether it's creating your own video games, writing BASIC computer programs, or learning how to play a musical instrument, Intellivision master component owners can add all The Right Connections and expand to home computing.

"It's always been our goal to keep the master component as the heart of a system that continually grows as technology advances," commented Peter Pirner, senior vice president of marketing for Mattel Electronics. "Now with the introduction of innovative peripherals to be available this year, we've broadened an existing product line and created the Intellivision Entertainment Computer System."

(more)

INTELLIVISION ENTERTAINMENT COMPUTER SYSTEM
OFFERS ALL THE RIGHT CONNECTIONS
2-2-2-2

Within the modular concept, the original master component or the re-styled Intellivision II remains the "brains" of the system with a 16-bit microprocessor that plays over 50 Intellivision games. Consumers can then connect a variety of peripherals and accessories in three categories--games, computing and music. Each of these categories features special software designed to enhance the hardware capabilities.

GAME

In the game category, there are several connections adding to the family's entertainment and enjoyment. The System Changer is designed to allow you to play all Atari 2600 compatible games when plugged into the master component. This means the Intellivision Entertainment Computer System now offers the largest library of game software anywhere. Similar to the Atari 2600, System Changer has left and right difficulty switches, an on/off and game select switch, plus a color/black and white switch. (Intellivision master component model #2609 requires factory adjustment at owner's expense.)

The existing Intellivoice Voice Synthesis Module adds another element of fun to video game play. By connecting the Intellivoice module to the master component and inserting a special voice cartridge, like B-17 BOMBER, SPACE SPARTANS, BOMB SQUAD or TRON SOLAR SAILER, realistic male and female voices become an integral part of the game play. Depending on the game, unique and distinct voices guide you, compliment your moves, give commands and even warn you of danger.

(more)

INTELLIVISION ENTERTAINMENT COMPUTER SYSTEM
OFFERS ALL THE RIGHT CONNECTIONS
3-3-3-3

Also available are Intellivision joystick controllers that can be plugged into System Changer or the Intellivision II directly. These joysticks combine the detail of the 12 key input and side action buttons from the Intellivision hand controllers with the ease of an arcade-type joystick. This accessory also works in place of the detachable hand controllers on the Intellivision II.

COMPUTING

With the right computer connections, Intellivision becomes a fully programmable computer that's expandable to a total system memory of 64K. The key component in this category is the Intellivision Computer Adaptor. It plugs into the master component and unlocks the power of the 16-bit microprocessor. The adaptor includes built-in BASIC language, provides an additional 2K RAM and 12K ROM, and increases the sound channels to six. Its most important feature, however, is its ability to accept a complete line of Intellivision peripherals and accessories.

The Intellivision Computer Keyboard, packaged with the adaptor, connects into the adaptor unit. The keyboard resembles a standard typewriter, with a 49-key full-travel keyboard. With BASIC computer language already built-in to the system, the computer provides an easy, color-coded approach to teach programming. It also brings a whole new dimension to video games by allowing the player to change many aspects of the game such as graphics, skill level and game action.

(more)

INTELLIVISION ENTERTAINMENT COMPUTER SYSTEM
OFFERS ALL THE RIGHT CONNECTIONS
4-4-4-4

To store important programs and documents, the computer adaptor and keyboard work with either the Intellivision Data Recorder or the Intellivision Printer. Both peripherals (new this year) plug into the RS-232 interface in the rear port of the adaptor. The data recorder offers easy filing and retrieval of programs while the printer works as a handy tool for "hard" copies of everything from spelling lists to recipes.

In addition, the computer adaptor accepts a number of accessories, such as the Intellivision Program Expander that adds 32K RAM and 12K ROM to the total memory of the system. The program expander comes in a cartridge form and plugs into the top of the computer adaptor. Extra hand controllers or joysticks (described earlier) plug conveniently into the adaptor, allowing up to four players to enjoy video games together.

Unique and sophisticated software in the computer category (available this year) fall into three areas--education, BASIC programming and "SUPER" games. In the education area, Mattel Electronics has created three programs: THE JETSONS WAYS WITH WORDS, NUMBER JUMBLE, and THE FLINTSTONES KEYBOARD FUN.

The Jetsons Ways With Words is an easy and fun way for youngsters to improve spelling and grammar. Number Jumble gives children of all ages an opportunity to sharpen mathematical skills in addition, subtraction, multiplication and division. The Flintstones Keyboard Fun gives both adults and kids a game to help develop useful programming skills.

(more)

INTELLIVISION ENTERTAINMENT COMPUTER SYSTEM
OFFERS ALL THE RIGHT CONNECTIONS
5-5-5-5

In the BASIC programming area, there will be three initial cartridges: "MR. BASIC MEETS "BITS 'N' BYTES," GAME FACTORY, and PROGRAM BUILDER. In "Mr. BASIC Meets "Bits 'N' Bytes," you can learn to write simple programs on the computer keyboard, as you are playing three lively video games. Game Factory lets you create your own video games. The Game Factory software comes with the graphics and game play already designed, but you select the characters and action to complete the program. Program Builder is an intermediate level cartridge to help you learn BASIC computer language and write your own programs.

In the "Super" games area, there are three titles: WORLD SERIES BASEBALL, MIND STRIKE, and SCOOBY DOO's MAZE CHASE. In World Series Baseball, the player experiences national TV action, with camera-pans across the playing field and a split screen for close-ups of base runners. A player can be team manager by programming in the batting and pitching statistics for the teams or compete against a friend.

A cassette (data recorder required) providing the vital statistics from famous baseball players throughout history will also be available to add to the enjoyment of World Series Baseball. With this cartridge/cassette combination (sold separately) Fernando Venezuela will actually be able to pitch against Babe Ruth!

Mind Strike is a three-dimensional space-age version of the chess board game. Play against the computer, a friend, or watch the computer play itself in one of more than 50 challenging variations, or create your own variation with the computer keyboard.

(more)

INTELLIVISION ENTERTAINMENT COMPUTER SYSTEM
OFFERS ALL THE RIGHT CONNECTIONS
6-6-6-6

In Scooby Doo's Maze Chase, you move Scooby Doo, Hanna Barbera Production's famous dog, through a maze after ghosts. Watch out! A skull and crossbones are hot on Scooby Doo's trail. The game comes with ten pre-programmed mazes that you can change, or start from scratch and create your own maze!

MUSIC

The computer keyboard isn't the only keyboard that works with the computer adaptor and master component. There is also an Intellivision Music Synthesizer (sold separately), a full-sized, 49-key music keyboard, with the same look, feel and touch of a real organ keyboard. The keyboard is a six-note, polyphonic synthesizer that's not only fun but educational as well. The system can teach the whole family how to read and compose music. It can even change the tempo and transpose keys of the songs you record when using the music software.

There will be two special music cartridges available this year: MELODY BLASTER and SONG WRITER. Melody Blaster is a musical version of the popular Intellivision Astromash video game. Instead of asteroids and satellites falling from the sky, musical notes descend in the pattern of popular songs. In Song Writer, the user can compose melodies and record them on a cassette for future playback and editing.

(more)



INTELLIVISION®

Entertainment Computer System



Intellivision System Changer
PLUG SYSTEM CHANGER INTO INTELLIVISION
AND PLAY ATARI 2600 VIDEO GAMES.

(FACTORY ADJUSTMENT REQUIRED ON ORIGINAL INTELLIVISION 2609 FOR SYSTEM CHANGER.)

SYSTEM CHANGER

SYSTEM CHANGER

INTELLIVOICE®
FOR USE WITH
INTELLIVISION®
MODEL #2609 OR
INTELLIVISION II

PROGRAM EXPANDER ALWAYS PLUGS INTO COMPUTER KEYBOARD

COMPUTER ADAPTOR

ALWAYS PLUG INTO
COMPUTER ADAPTOR

© Mattel Electronics, Inc. 1983



INTELLIVISION®

Entertainment Computer System
(Computer and Game Peripherals)



Intellivision II Joystick

Education

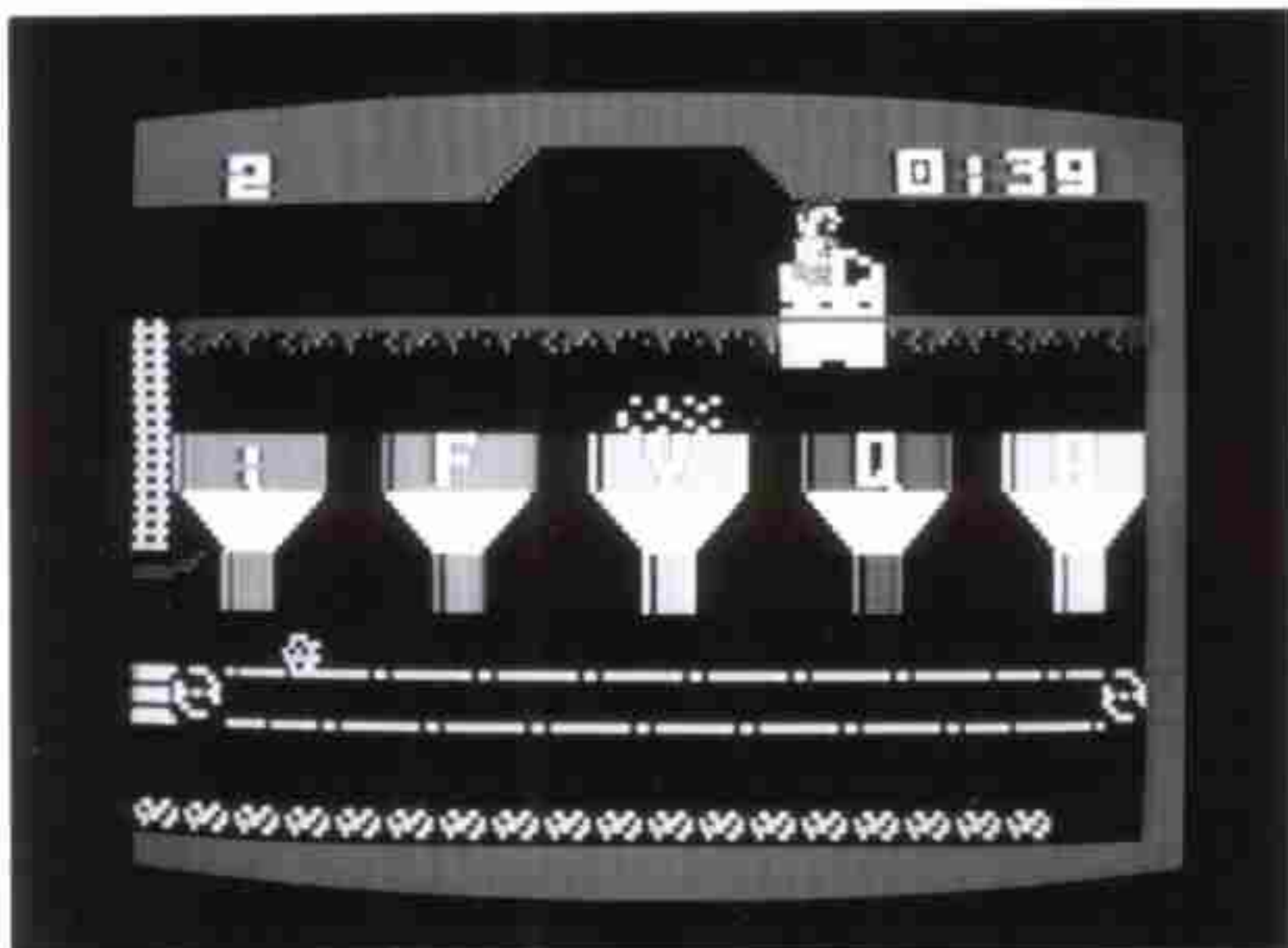
Basic Programming



Number Jumble™



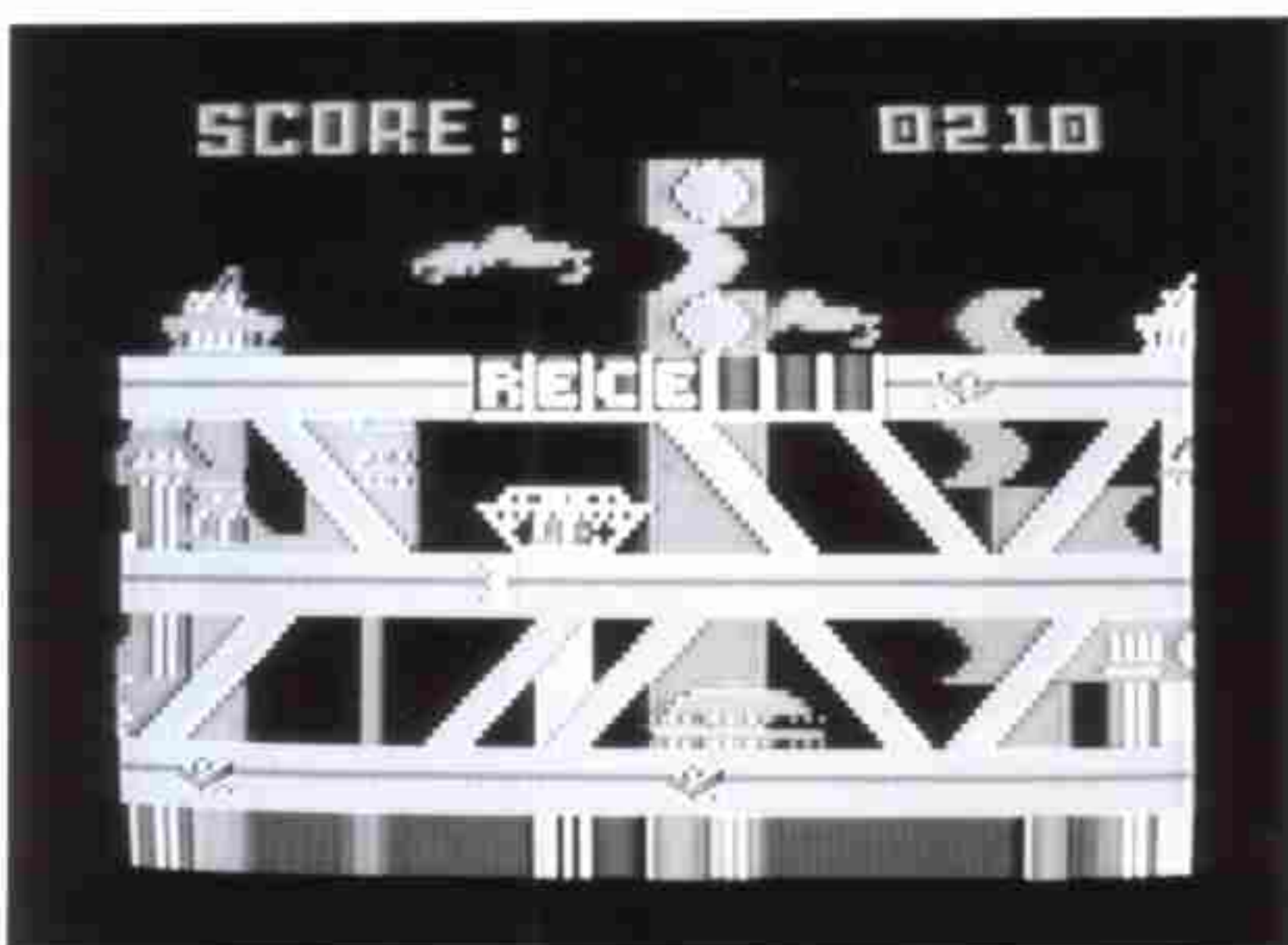
Game Factory™



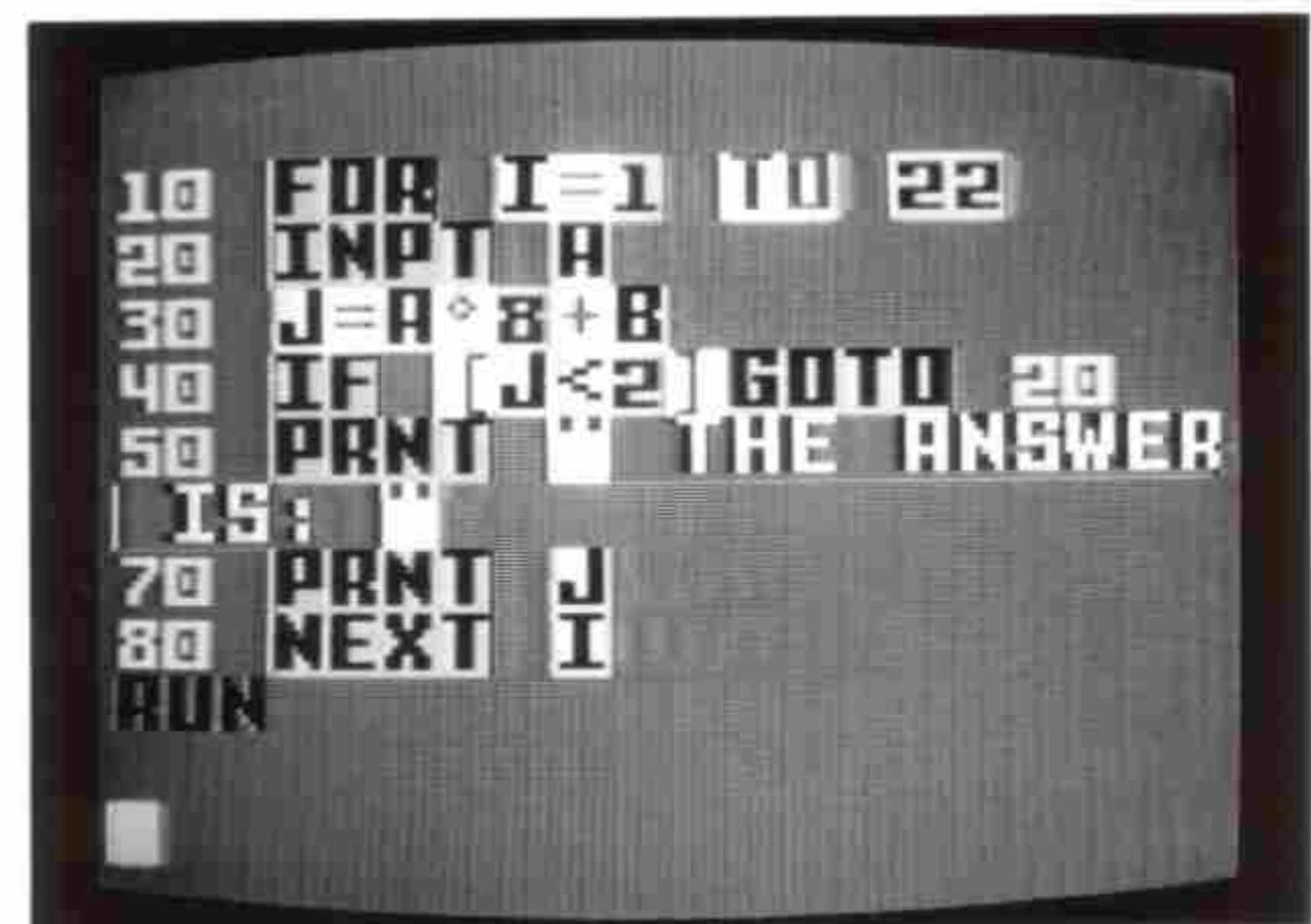
The Flintstones[×] Keyboard Fun



™Mr. BASIC Meets 'Bits 'N' Bytes'



The Jetson's[×] Ways With Words



Program Builder°

[×] Used under license from Hanna-Barbera Productions, Inc. ©1983 Hanna-Barbera Productions, Inc.

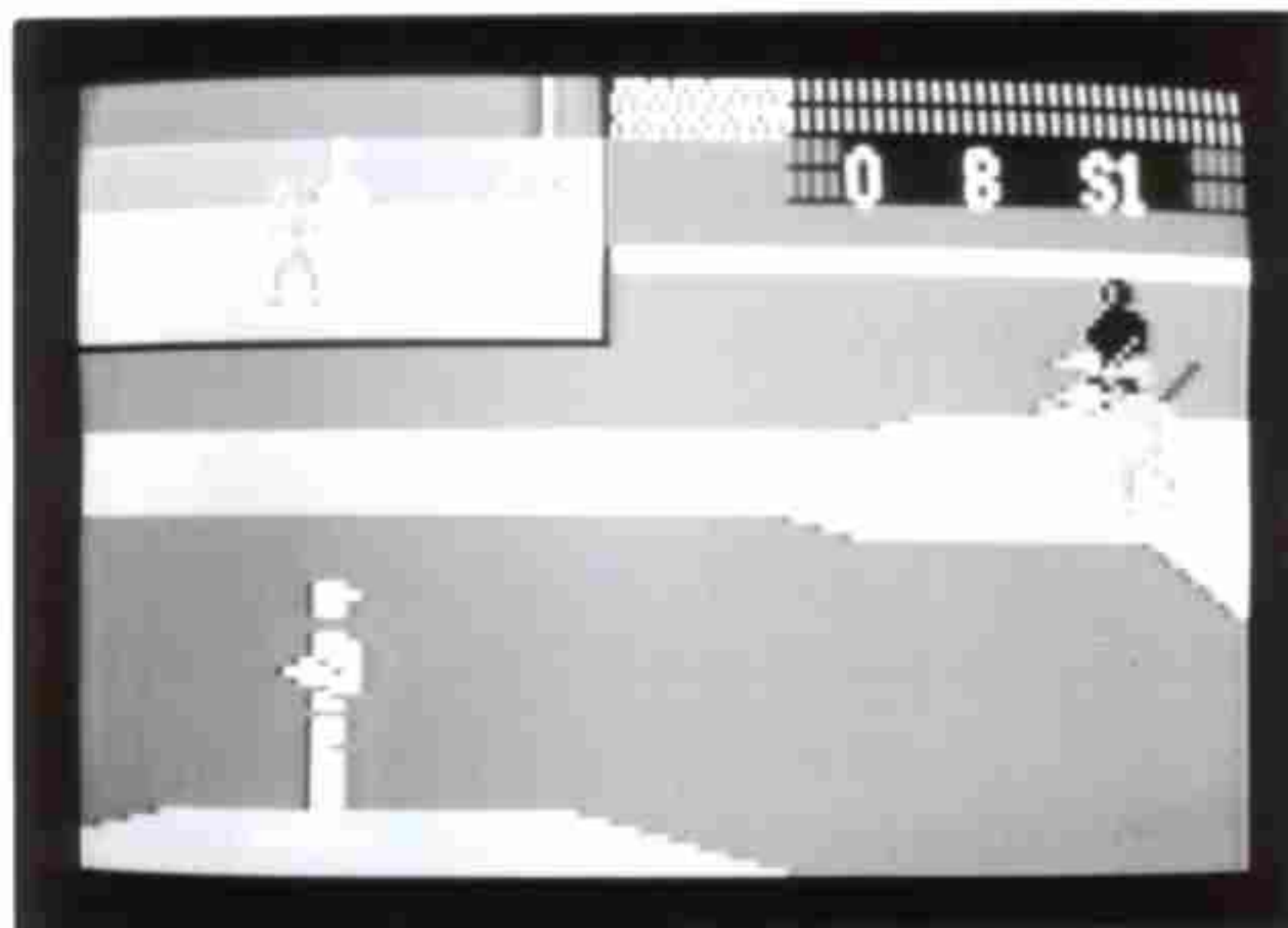
[°] Name subject to change.

Music

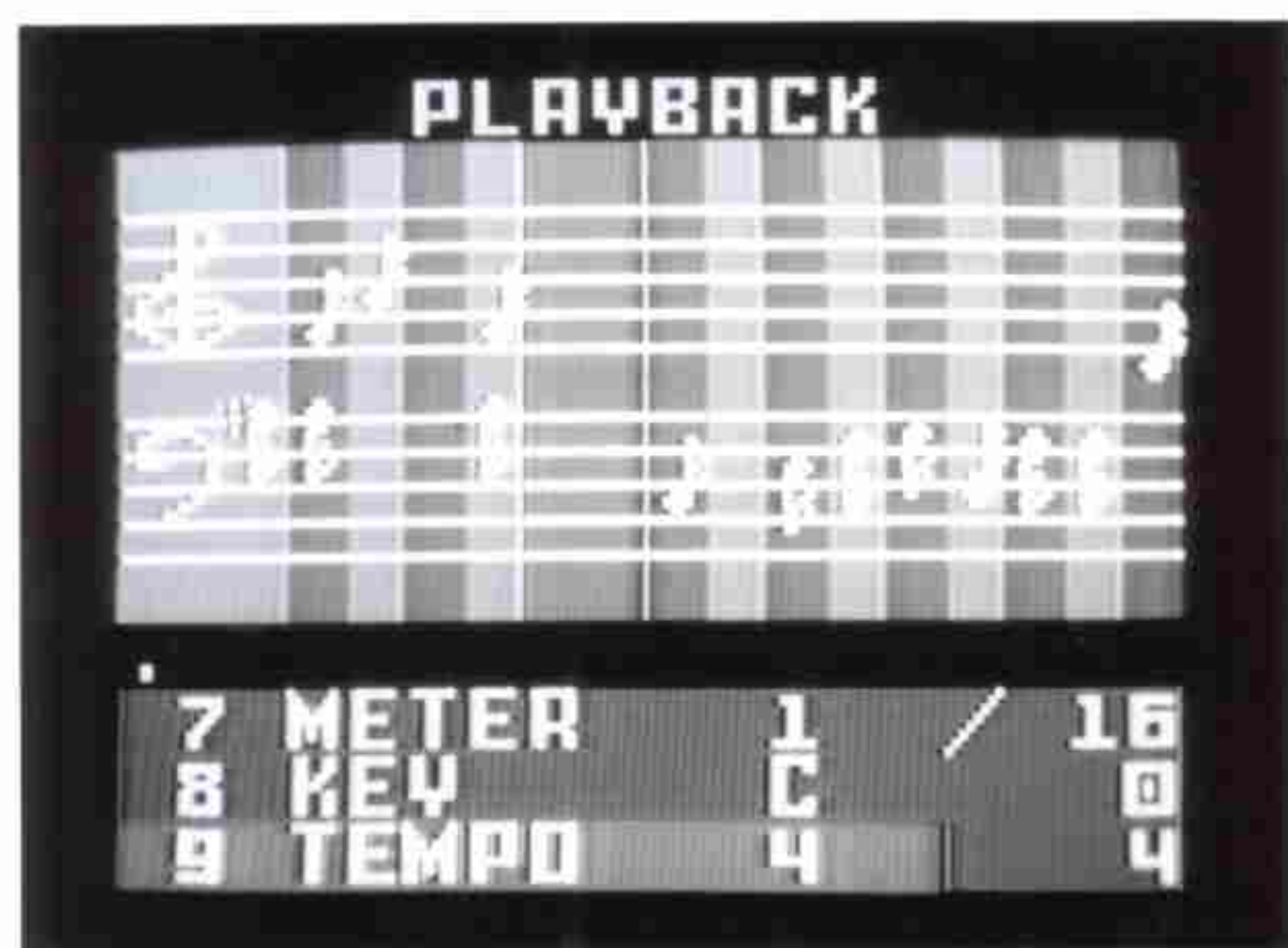
Super Games



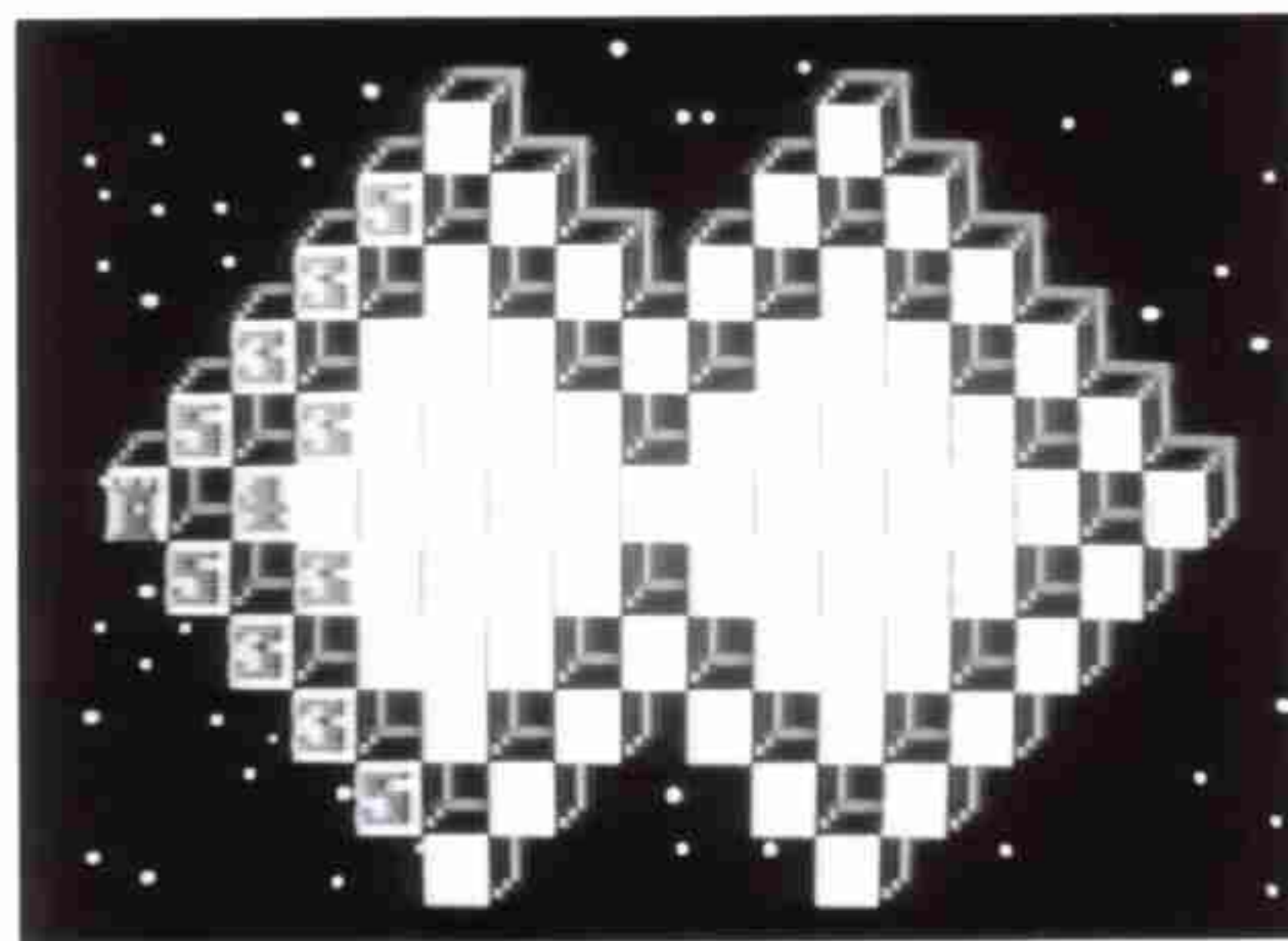
Melody Blaster™



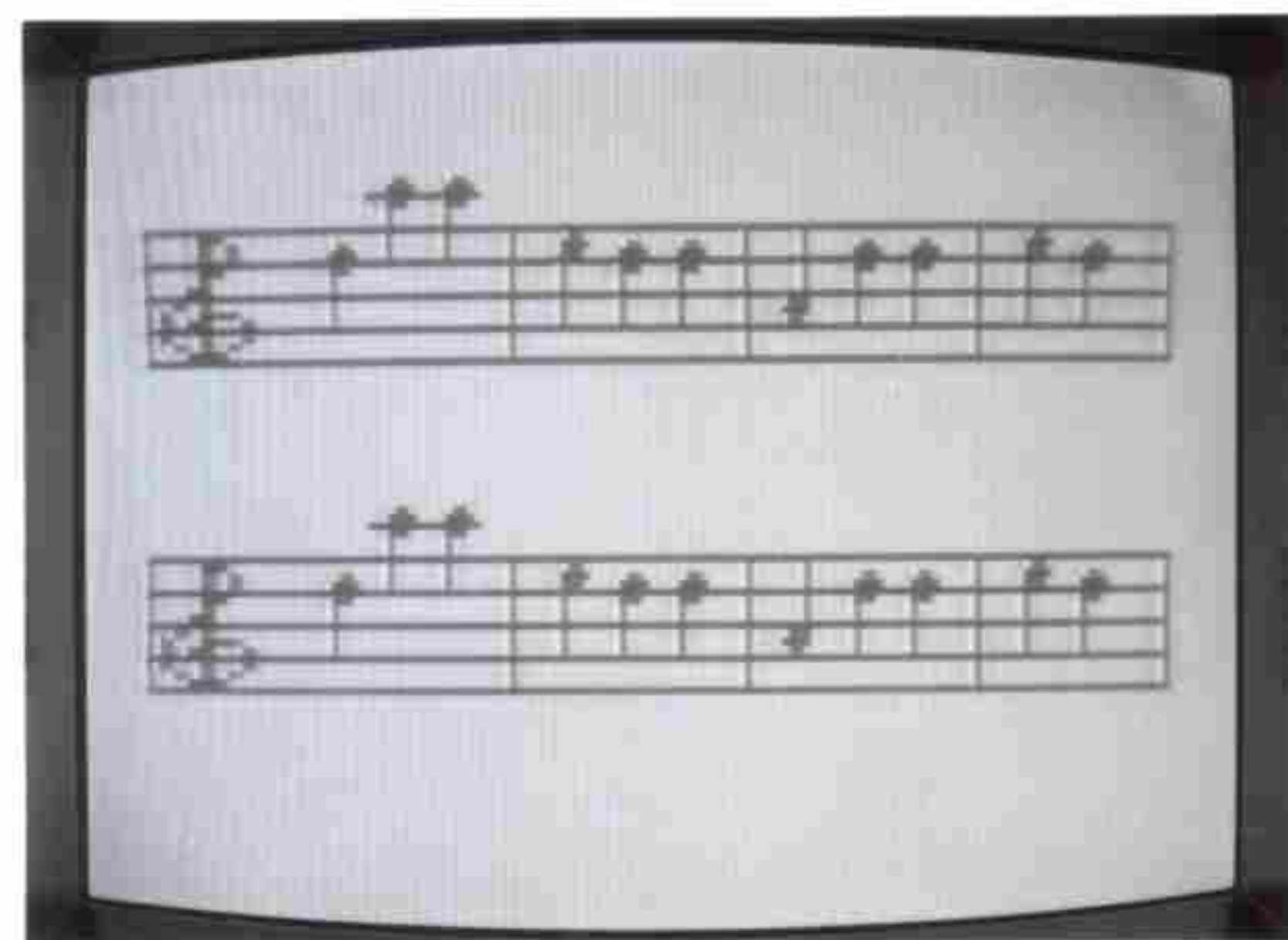
World Series# Baseball



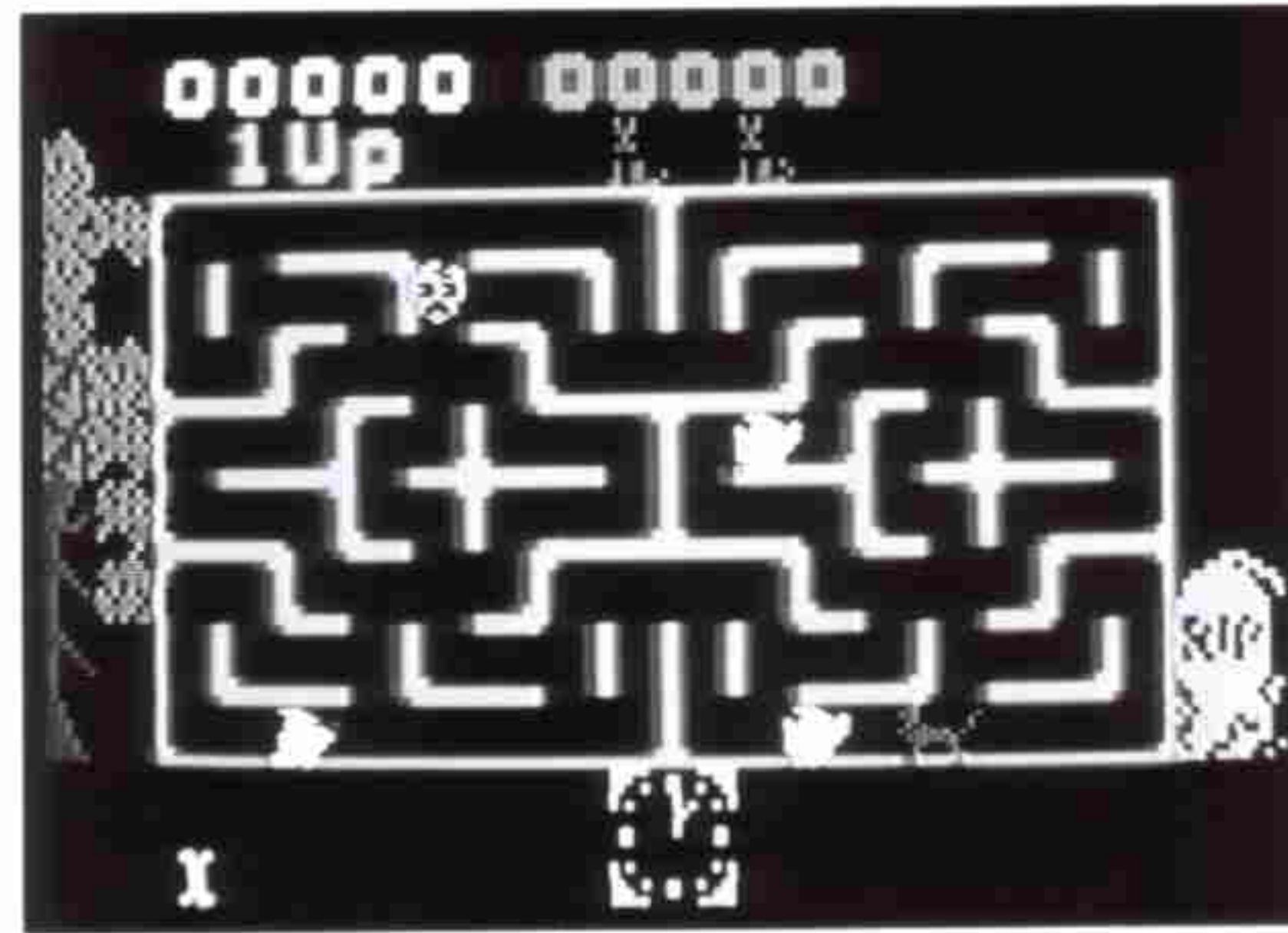
Song Writer™



Mind Strike™



Music Tutor°



Scooby Doo's X Maze Chase

X Used under license from Hanna-Barbera Productions, Inc. ©1983 Hanna-Barbera Productions, Inc.

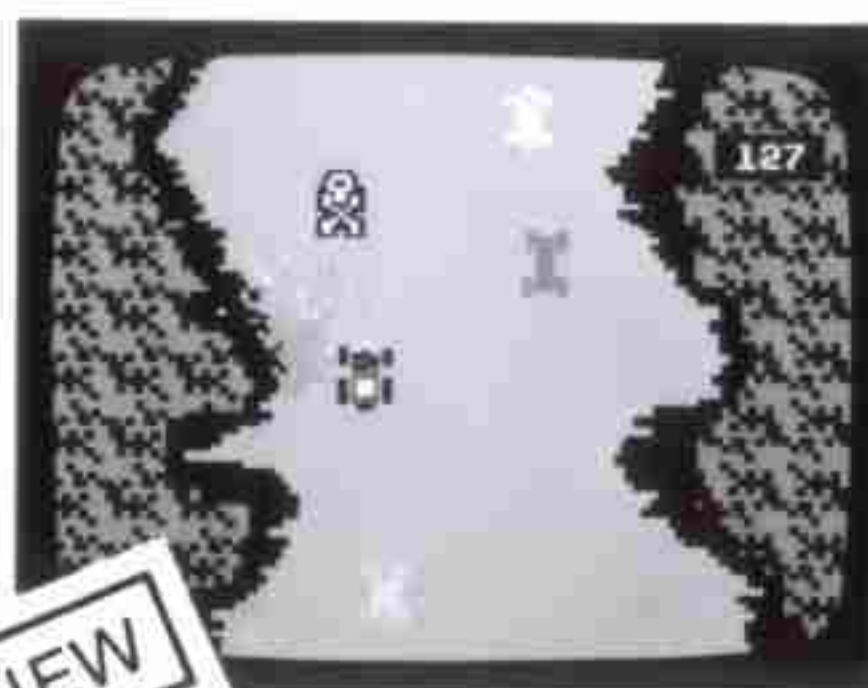
° Name subject to change.

Trademark used under license from designated owner.

©Mattel Electronics, Inc. 1983



BurgerTime™*

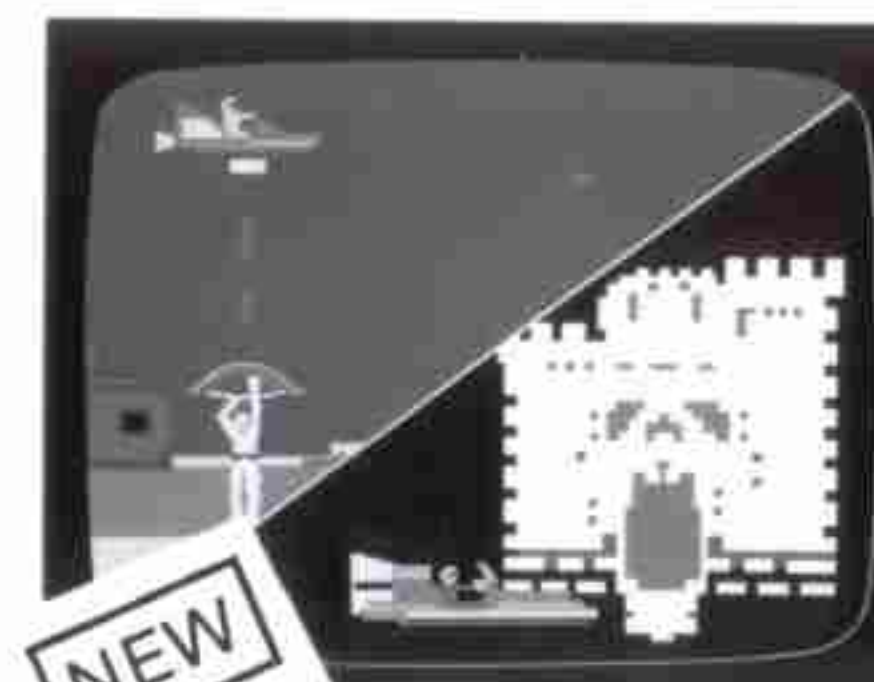


NEW

Bump 'N' Jump™*

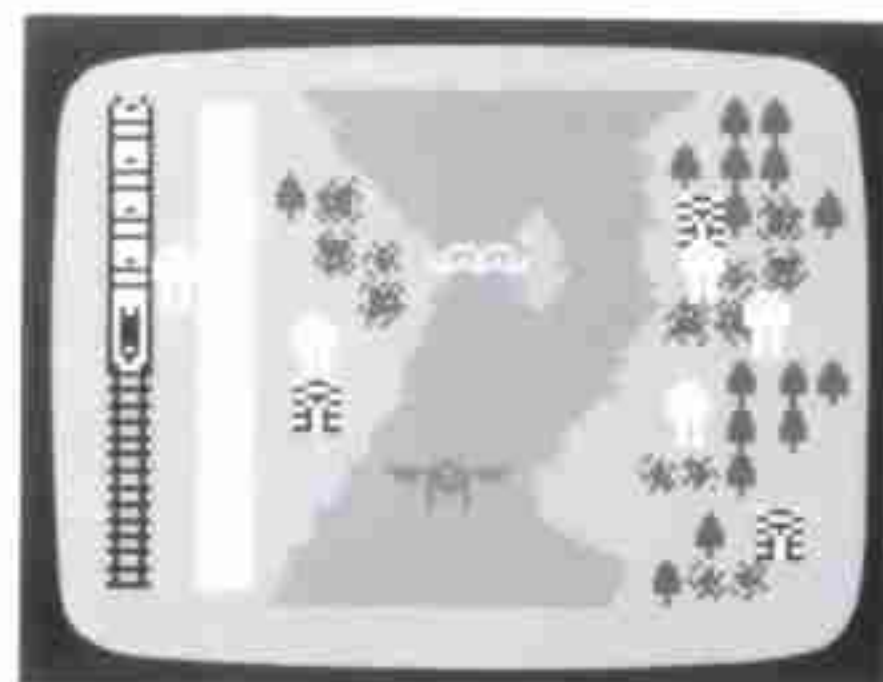


ADVANCED DUNGEONS & DRAGONS™**
TREASURE OF TARMIN™** Cartridge



NEW

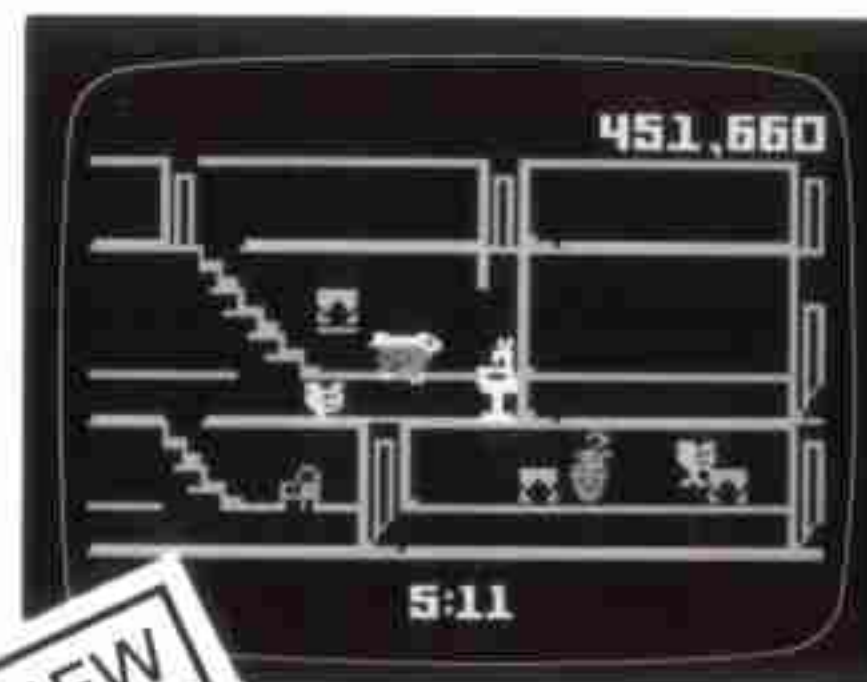
Masters of the Universe™+



Mission X™*



Loco-Motion™++



NEW

Kool-Aid MAN™°

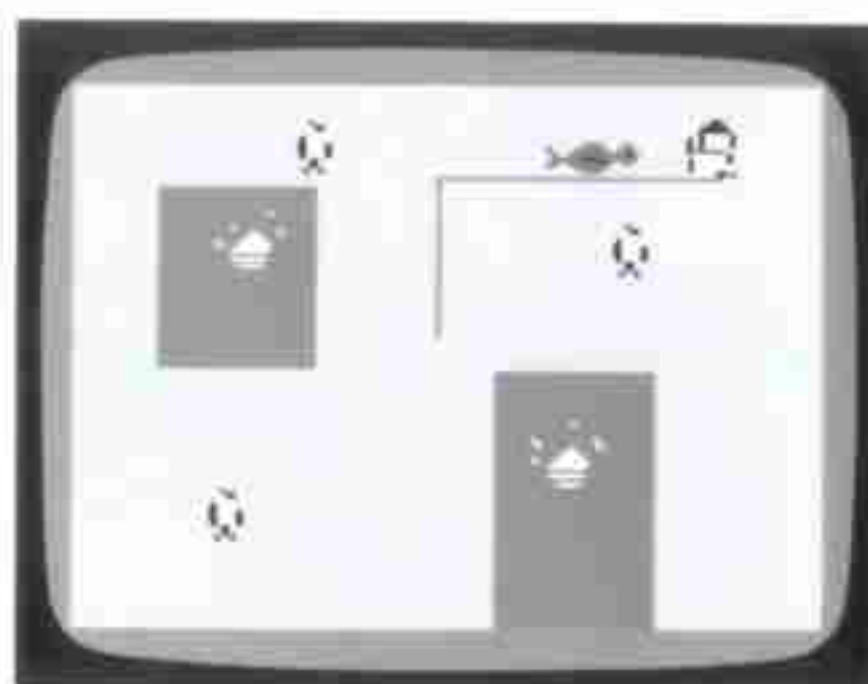


NEW

Rocky and Bullwinkle™°°



All Star Major League† Baseball



Thin Ice™*



Buzz Bombers™



NEW

Pinball

* Trademark of DATA EAST USA, INC., used under license. ©1982 DATA EAST USA, INC.

** ADVANCED DUNGEONS & DRAGONS and TREASURE OF TARMIN are trademarks owned by and used under license from TSR Hobbies, Inc. This Cartridge is approved by TSR Hobbies, Inc., the publisher of the 'Fantasy Role-Playing Games' sold under the trademark ADVANCED DUNGEONS & DRAGONS.®
©1982 TSR Hobbies, Inc. All Rights Reserved.

+ MASTERS OF THE UNIVERSE is a trademark owned by and used under license from Mattel, Inc.

++ A trademark of and used under license from Konami, Industries Co., Ltd.

° KOOL-AID MAN™ is a trademark of GENERAL FOODS CORPORATION.
©1983 GENERAL FOODS CORPORATION.

°° Trademark used under license from P.A.T.-WARD. ©1982 P.A.T.-WARD.

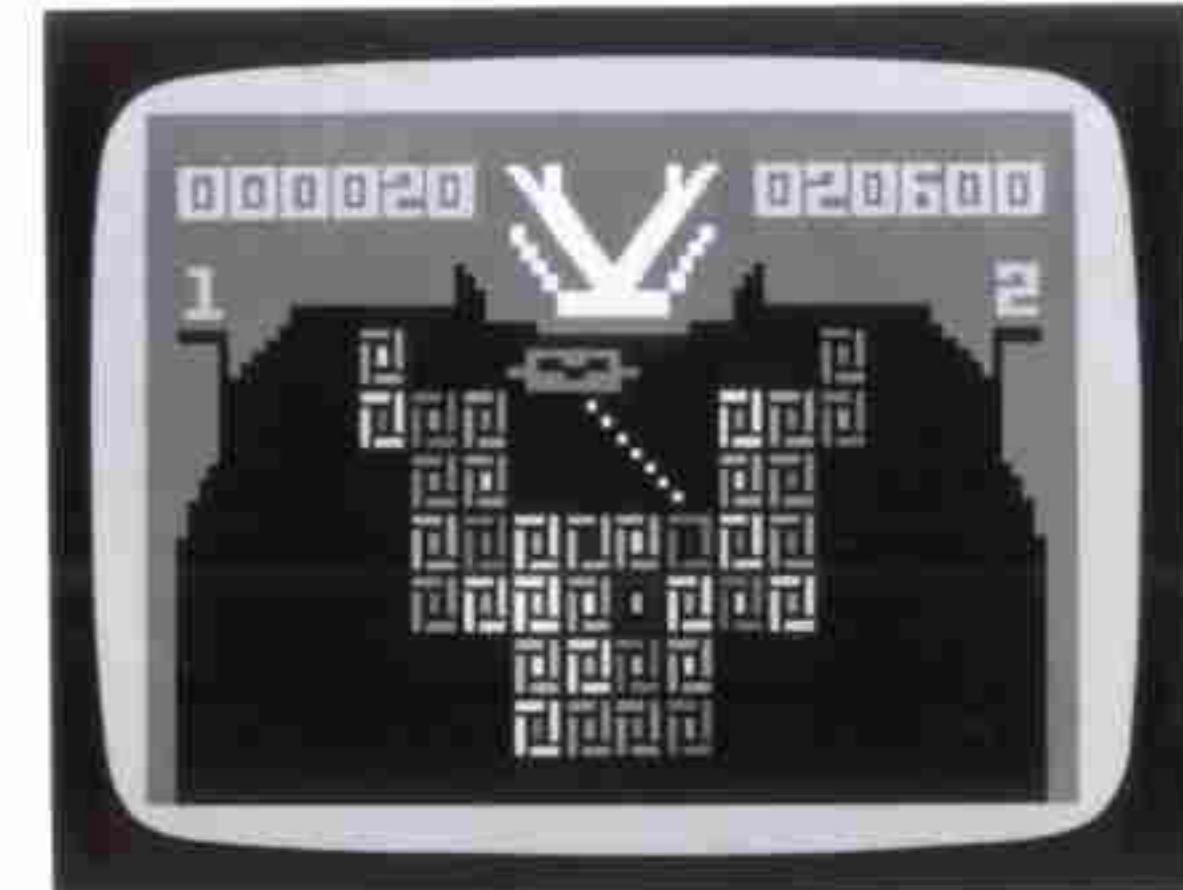
† Major League trademark used under license from Major League Baseball Promotion Corporation.



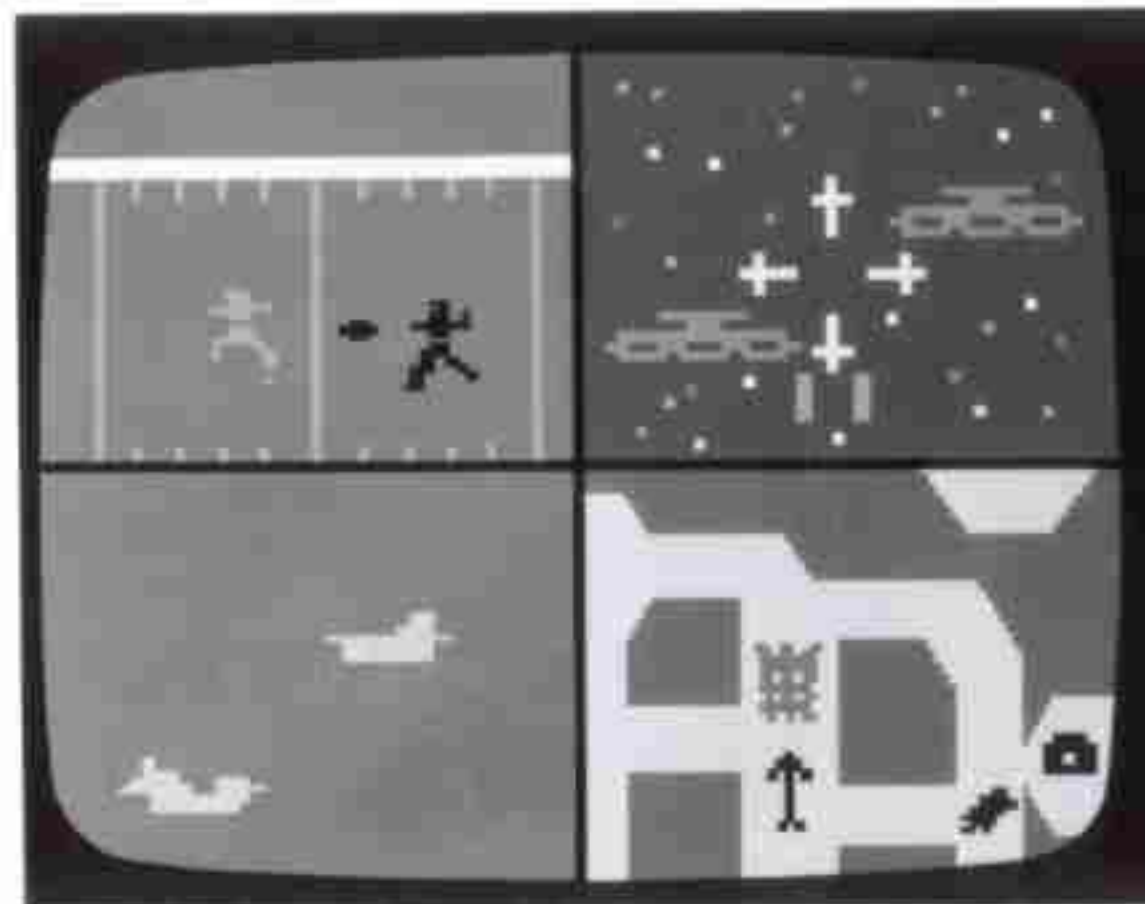
Motocross



Mystic Castle™



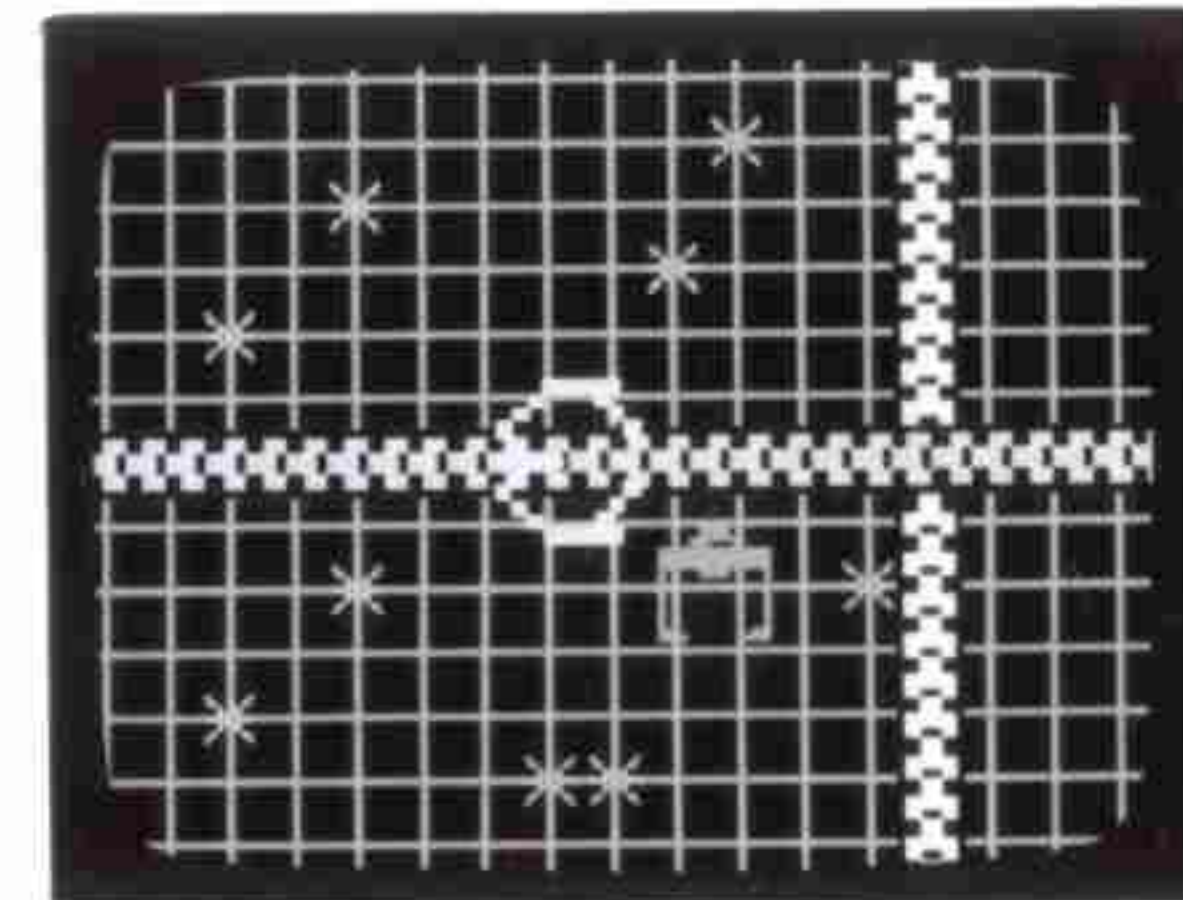
Vectron™



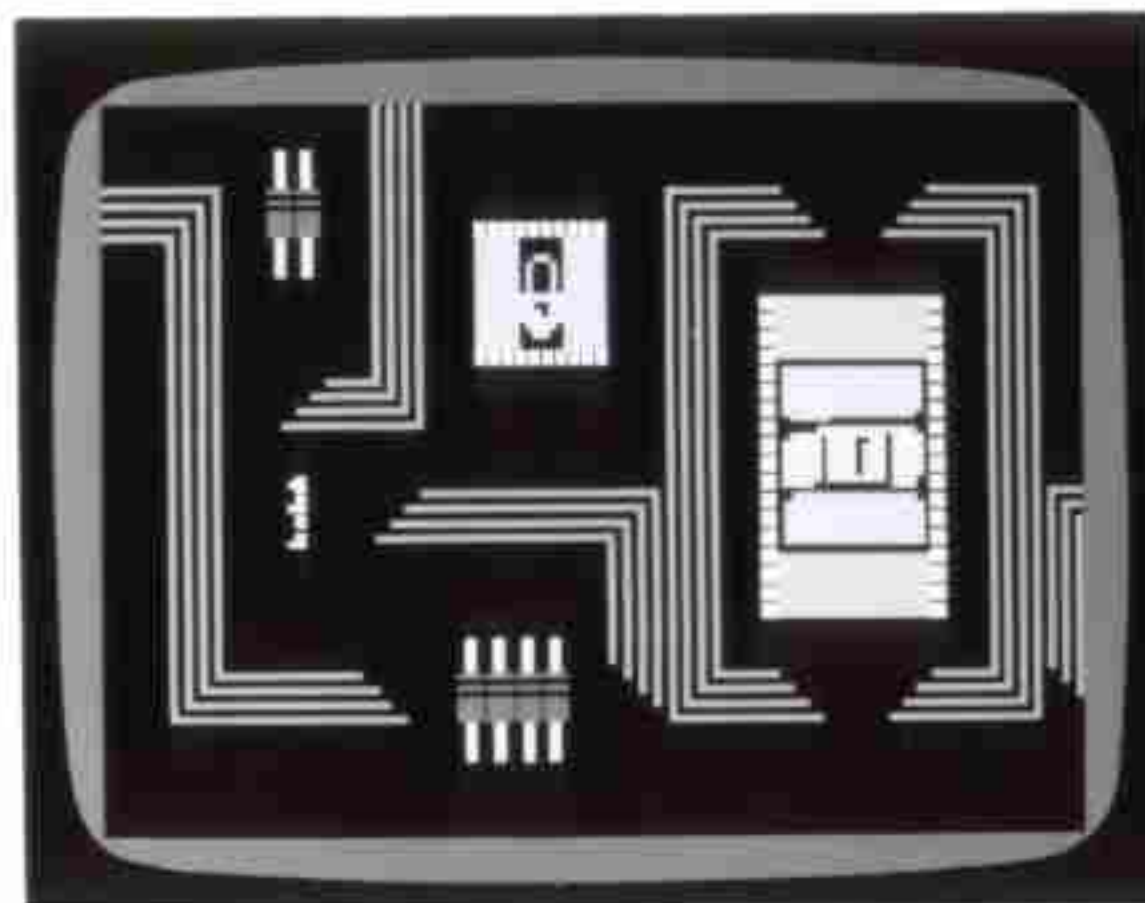
Sharp Shot™



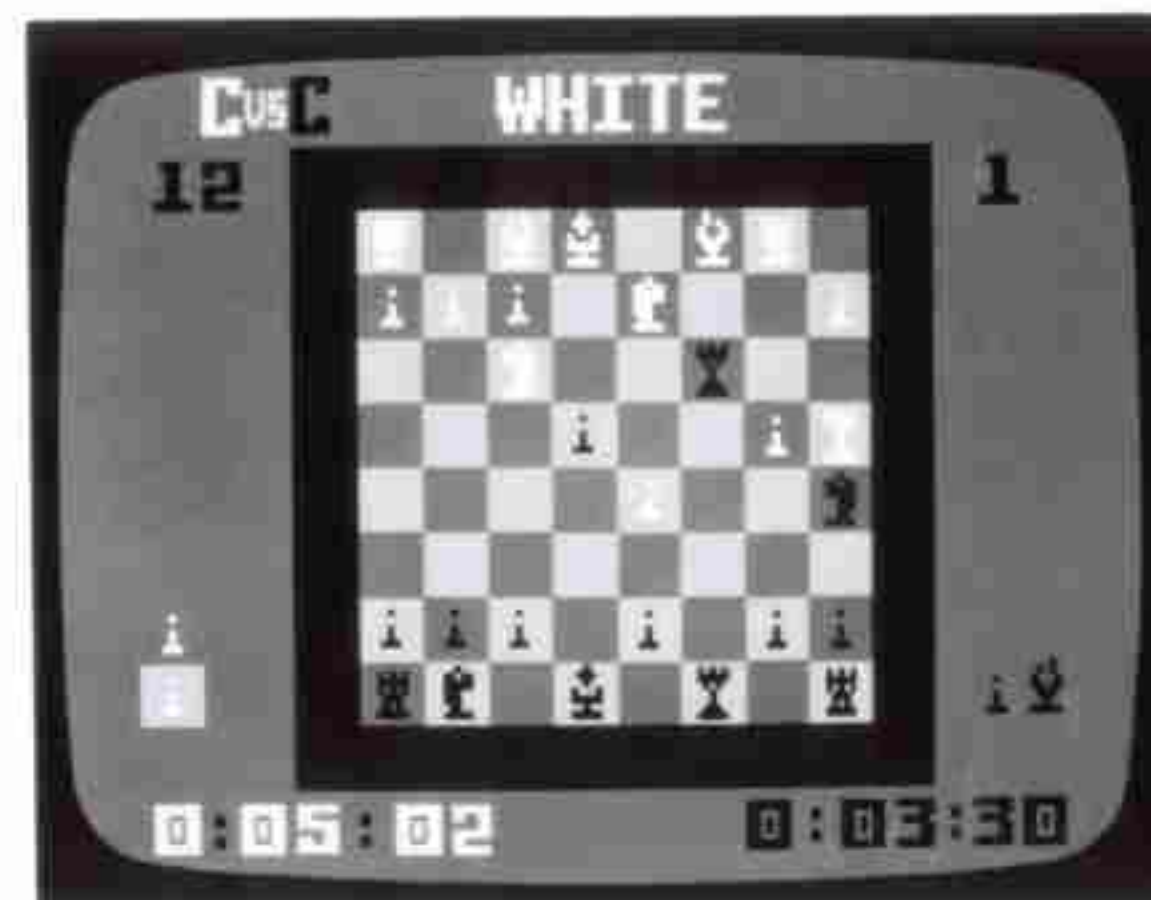
Shark! Shark!™



Tron Solar Sailer™†



Tron Maze-A-Tron™†



USCF†† Chess



Royal Dealer™

† Trademark owned by and used under license from Walt Disney Productions. ©1982 Walt Disney Productions.

†† Trademark used under license from designated owner.

MATTEL ELECTRONICS 1983 SOFTWARE

As the merry chef in BURGERTIME, you're out to build delicious hamburgers. As you run through the colorful maze assembling the ingredients watch out for the menacing Nasties -- Mr. Hot Dog, Mr. Egg and Mr. Pickle -- who are out to ruin the meal. Bury them under beef patties, lettuce and buns, or knock them out with peppers. Build four burgers and you're on to the next level.

In BUMP 'N' JUMP, you hit the road with Jumpin' John, the daring daredevil driver with lead in his foot and victory on his mind. Drive with him as he bumps other cars off the track, jumps over perilous hazards and speeds down the raceway for scores that take you right into the winner's circle. But keep a steady hand on the wheel, because once his car goes off the road, he crashes and must start again.

In the ADVANCED DUNGEONS & DRAGONS^{TM*} TREASURE OF TARMIN^{TM*} Cartridge, you've found the secret map to the underground lair of the dreaded Minotaur. You can go in, but you'll never come out unless you slay the Minotaur and claim his Great Treasure. As you make your way through the hallways and chambers, monsters yield their conventional or spiritual weapons. You must gather the proper defenses along the way. But use them sparingly, the Minotaur looms closer.

In MASTERS OF THE UNIVERSE, you are the powerful HE-MAN, hero of Eternia. Only you can stop the villainous Skeletor from conquering your people. You must weave your way through the maze to Castle Greyskull to find the Power Sword that can stop him. Once at Castle Greyskull, you battle Skeletor's arrows and dangerous moving walls to protect the secrets of Eternia contained inside.

You're flying a top secret bombing raid over enemy territory in MISSION X. Your mission: To wipe out the enemy battle-ships, tanks, artillery guns and bridges that come into view as you sweep over the country. Watch out for enemy flak and gunfire. Touch down and go at it again. Fly during the day, or attempt a dangerous night mission.

You're the engineer in LOCO-MOTION deftly guiding your train through scrambled track. You must put the right tracks together to help the train continue safely on its way to pick up passengers. And you must avoid the crazy train. Non-stop fun as you race to beat the time schedule.

In KOOL-AID MAN, the object of the game is to get all the Kool-Aid ingredients over to the sink. The kids must gather all the Kool-Aid, sugar and a pitcher and bring them to the sink, all while avoiding the dangerous Thirsties. After all the ingredients are assembled, the game moves to another phase. The game is timed for fun. Based on the famous Kool-Aid Pitcher Man character from General Foods, it's great for children.

ROCKY AND BULLWINKLE must stop the evil Boris and Natasha from robbing a train full of priceless valuables. While Boris uses "Upsidasium" to float the valuables up to Natasha's waiting helicopter, Rocky must fly around and intercept them. When Rocky catches the valuables, he gives them to Bullwinkle for safe keeping. The game also has a special education mode which causes Rocky and Bullwinkle to intercept numbers instead of valuables in order to create equations. Based on the Hanna-Barbera cartoon characters.

LOCK 'N' CHASE is a fast-action chase game in which you maneuver your thief through the maze, picking up coins and other treasures. Billy-club swinging cops are in hot pursuit, but you can temporarily escape them by locking gates behind you. The longer you survive, the more valuable the treasure becomes.

The relentless robots have you on the run in NIGHT STALKER. Destroy one, and it's replaced by an even faster and smarter one. Your only hope lies in a cache of weapons hidden deep within the labyrinth. There's a bunker to hide in, but be careful. The spiders and bats can give a stunning sting to slow you down and make you easy prey for the alien robots.

In ALL-STAR MAJOR LEAGUE BASEBALL, you're the home team in blue, engaged in the most realistic home video baseball game around. You've got to hit the fast-breaking curve balls or smoking fastballs. But don't pop up, because this game features fly balls as well as grounders. You can also steal bases and kick up a cloud of dust as you slide into the bag. Nine innings

of action-packed fun.

In THIN ICE, you're an Arctic penguin surrounded by a cold group of rival penguins. And it's up to you to break the ice. Skate around each penguin to make the ice give way and send your rival into the freezing water. But you'd better skate fast, a hungry seal is chasing you the whole time. Just when you think you're safe, the mammoth polar bear appears.

You're out to extinguish an angry swarm of honey bees armed with only a spray can of bee repellant in BUZZ BOMBERS. As the bees buzz ever closer, you hit them with a blast of spray to turn them into pieces of honeycomb. The more honeycombs, the more points you score. Don't get stung.

PINBALL is the video version of arcade pinball games. You get five balls for scoring points and three different game variations along with realistic flipper action and authentic sounds. For one or two players.

In MOTOCROSS, you're racing your motorcycle on an outdoor course. You score points by completing the course in the fastest time, but watch out. Water hazards, missed turns and crashes cause you to lose time and points.

MYSTIC CASTLE is a whimsical new medieval fantasy game. You're the knight in shining armor on your quest for survival. Your journey takes you through the enchanted forest where three dragons wait with heated breath. Then you go through a castle

maze to a dark dungeon, where three demons present your final challenge.

Hungrees, G-spheres, splits, sweeps and prizums--the nasties--are out to stop you from building your energy bases in VECTRON. Use your Vectron to build the bases level by level to increase your score. Or, use Vectron to shoot down or stun the nasties with energy blasts. But don't run out of energy or the nasties will nibble away at your score.

SHARP SHOT is an exciting target shooting game specially designed for small children. There are four different shooting ranges for one or two players. Hit the pass receiver. Shoot down the spinning spacecraft. Bomb Navy ships. Fire at the maze monster. Challenging action for video game beginners.

It's the survival of the fittest in the deep, dark waters of the ocean in SHARK! SHARK! And you're just a little fish. You must eat smaller fish to stay alive and grow. But you're not the only one struggling for survival. Bigger fish are out to eat you. Beware of the shark.

You're trapped in the computer with TRON in TRON SOLAR SAILER, and you must ward off the belligerent Master Control Program in order to transport your space vehicle, the Solar Sailer, from one point to another. Yori, your female navigator, advises you of the status of your ship and BIT helps you guess the code which could mean your escape. If you upset the Master Control Program, he'll tell you "You'll regret this" or "I have total control." For use with Intellivoice

voice synthesis module.

You're inside the electron stream of the coldly efficient Master Control Program in TRON MAZE-A-TRON. The only way you'll survive is by penetrating its inner defenses before it destroys you. Only you must journey through the integrated circuitry of the very computer you're out to get. The slightest miscalculation and you'll be blasted into ions.

USCF CHESS is the perfect game for a chess player, novice or master. You adjust the degree of difficulty and the time limit on moves to match your skill level.

Beat the computer at any four classic card games in ROYAL DEALER, a one-player game of Hearts, Crazy Eights, Rummy or Gin Rummy against one, two or three computer-controlled opponents. Three poker-faced ladies watch you carefully as the computer keeps score.

You're engaged in a worldwide search for a priceless artifact-- a solid gold human skull in IN SEARCH OF THE GOLDEN SKULL. Use the treasure map to determine the Golden Skull's location, then begin your perilous search. Along the way you'll encounter air battles, steaming swamps and the pyramid maze. How far will your obsession take you?

In STAR STRIKE you command a fighter interceptor, flying a few hundred feet above a narrow canyon. Your mission: Destroy the alien silos that threaten the planet Earth. Enemy spacecraft

hurl themselves at you and attempt to shoot you down. You alone can save our planet.

Our hero, TRON, is locked in battle against the Evil Blue Warriors in TRON DEADLY DISCS. Score points by knocking out the computer-controlled attackers with flying discs. But the attacking warriors are also armed with destroyer discs, and they'll come after TRON.

In ADVENTURES OF TRON, you must outwit a complex master control program that sends out recognizers, grid bugs and cannon-firing tanks in an attempt to destroy you. It'll take strategy, quick reflexes and a cool head to survive.

As the pilot of your bomber, your mission is to blast the enemy out of the sky in AIR RAIDERS. Zero in on enemy planes, bank right or left, climb and dive. It's a hit. But be sure to keep track of your fuel and ammo, or you may have to land to refuel.

Aquarius LOGO is the simple computer language that's available in one convenient and affordable cartridge. Kids use LOGO's "Turtle Graphics" to make line drawings and at the same time, gain entry into the fascinating world of computers. As the designs take shape, so does their knowledge in programming, graphics, mathematics and more. Aquarius LOGO teaches the logic of computer programming while using commands based on plain English.

You can find the answers to all kinds of family financial planning questions with FINFORM, including what happens to your entire annual budget whenever financial conditions change. Accurately monitor your family budget so you can properly plan major expenses. FinForm features a 63-column, 255 row spreadsheet with over 16,000 programmable areas. That makes it an extremely flexible tool to help you make important financial decisions.

FILEFORM is the truly simple way to generate personal notes and keep accurate personal records. FileForm has powerful word processing capabilities to help you organize and store all kinds of information about your family, your home or your belongings. Keep important addresses, dates, recipes, all types of home records. FileForm will also help you update and edit any information you have stored in Aquarius. Change words, sentences or paragraphs. Information is filed and cross referenced. It's like having a computerized filing cabinet.

AQUARIUS EXTENDED MICROSOFT BASIC will give you more power and versatility to write your own programs. Write a program to help you with a hobby or business. You can even develop your own video game. You'll have improved editing power, cursor control and more powerful graphics commands including line, circle and print commands. An extremely flexible tool to expand your computing capability.

In SPELLING IN SPACE, you are at the helm of a spaceship.

A word will flash on the screen and it is your job to maneuver your craft and capture letters in outerspace that spell the word. Watch out for the letter-stealing comet!

MATH 'N' MAZES is an unbeatable combination of fun and learning.

A key number will appear on the screen. Your goal is to add and subtract numbers you find in the maze to total you key number. Stay alert because there are menacing robots that can throw you off guard.

With the AQUARIUS BIORHYTHMS cartridge, you can track your emotional, physical, and mental biorhythmic cycles with the touch of a button. Simply key in your birthdate, and Aquarius will display your biorhythm chart for one day, or the whole year. Will today be your critical day? (For entertainment purposes only.)

You and SNAFU start off with little lines that begin to grow, but before you know it, the lines may trap you! The lines are fat, tangling, like snakes weaving a super maze! You've got to make lightning quick strategic decisions. If you hesitate... or slip...you're surrounded!

With ASTROSMASH, it's up to you to shoot down everything in sight in a spectacular barrage of falling rocks, bombs, guided missiles and attacking UFO's. You've got unlimited ammo,

and the sights and sounds of battle increase as you roll up the score. Marksmanship and fast reflexes earn you more lasers. Watch out! The barrage increases in intensity as you destroy more of the attackers!

With SEA BATTLE, there's a strategic battle on the high seas. As the Admiral, you command a fleet of destroyers, battleships, subs, minesweeps and aircraft. It's full speed ahead as you fight your way through enemy mines, fast-attacking battleships and other hazards. Don't get torpedoed. You must sink the enemy Admiral, before he sinks you.

In UTOPIA, you and your opponent each have an island to rule in this challenge simulation game. Will you be a benevolent ruler or an aggressive dictator? You must provide food, housing, industry and other essentials for your people. Take good care of them, if they're unhappy, they may revolt!

With REVERSI, you become the eminent strategist in this electronic board game. Cleverly position yourself to snatch victory from the jaws of defeat. Let your opponent (or the computer) believe they're in control. Leverage your early losses with strategic corner play then make your move!

Are you a novice, intermediate or advanced player of CHESS? This computerized version of the ultimate strategy game is challenging to any level of player. Play against the computer or an opponent. Or, learn by watching the computer play against

itself. There are eight degrees of difficulty and a time limit on moves. Playing Aquarius Chess is the perfect way to improve your skill.

NUMBER JUMBLE adds a new dimension to math. Fun! Children of all ages can sharpen their addition, subtraction, multiplication and division skills through the challenge of a video game. They can play at their own pace and make the math games harder as their skills improve. Comes with special math exercises.

Experience the world of words with THE JETSONS WAYS WITH WORDS, in a colorful and action-packed video game. It's easy to improve your spelling and grammar skills when you're having fun doing it. Especially when your instructors are the Jetsons. The programs progress through grade levels, from pre-school on up.

SONG WRITER lets you compose your own melodies, right before your eyes. Play on the Music Synthesizer and watch the notes appear on your TV screen. You can compose all kinds of music, from Bach to rock. And your favorite compositions can be stored on cassette (both the sound and notation) for future playback or editing.

MELODY BLASTER is the musical version of the popular video game, Astrosmash. And a fun, new way to learn musical notation. As musical notes fall from the sky in the pattern

of a popular song, you must play the right keys to shoot them down. The faster you shoot down the notes, the faster you're learning to play your favorite songs.

WORLD SERIES BASEBALL is like playing baseball in front of national TV! The TV cameras catch different angles of the games. Pan across the playing field. Even pick up the base-runners on a split screen. Be the manager by programming-in batting and pitching statistics for your team. Program Hall of Famer's to play against each other. Imagine Fernando Valenzuela pitching against Babe Ruth! Truly the next generation of video games.

The FLINTSTONES KEYBOARD FUN makes it fun to learn keyboard skills. Now everyone can enjoy the action of a colorful and exciting video game and develop useful keyboard skills at the same time. An easy way to put the whole family in touch with the computer age.

GAME FACTORY lets you create your own video games without having to do all the work, because it comes with the graphics and game play already designed for you. You just select the characters and the action, then finish the program. You can even plug any regular Intellivision game cartridge into the system to borrow your favorite Intellivision characters!

PROGRAM BUILDER is an intermediate level cartridge to help you learn BASIC computer language and write your own programs. On-screen lessons and a simple step-by-step manual take you

through the fundamentals of the BASIC language. And also show you how BASIC programs can be used around the house. You'll be writing your own BASIC programs in no time! (Requires the Intellivision Program Expander.)

"MR. BASIC MEETS 'BITS 'N' BYTES" is an introduction to computers and BASIC programming through the fun of a video game. Control "Mr. BASIC" and capture the "Bits" and "Bytes" in one of three exciting games. Learn to write simple programs on the Computer Keyboard. Or, use the hand controllers just for fun. These programs use our unique color-coded graphics system to make learning programming as easy as a game.

MIND STRIKE is a futuristic, three-dimensional space version of a chessboard game. Pit your skill against a computer, or another player. Alternate turns with your opponent or move simultaneously for a fast-action game. You can even sit back and watch the computer play itself. Use the keyboard to program the computer opponent to match your skill as you master the game. Select from over 50 challenging game boards.

In SCOOBY DOO'S MAZE CHASE, you're Scooby-Doo chasing ghosts through a baffling maze. When suddenly you discover you're the one being chased - by the evil skull and crossbones. Drop magic obstacles to slow the Jolly Roger's pursuit. Choose from 15 pre-programmed mazes. Or, use the computer keyboard to create your own.

*ADVANCED DUNGEONS & DRAGONS and TREASURE OF TARMIN are trademarks owned by and used under license from TSR Hobbies, Inc. This Cartridge is approved by TSR Hobbies, Inc., the publisher of the 'Fantasy Role-Playing Games' sold under the trademark ADVANCED DUNGEONS & DRAGONS. c 1982 TSR Hobbies, Inc. All Rights Reserved.

MATTEL ELECTRONICS SOFTWARE DIRECTORY

TITLE	INTELLIVISION	AQUARIUS	ATARI VCS (M NETWORK)	IBM PC (M NETWORK)	APPLE II APPLE plus APPLE IIe (M NETWORK)	HAND-HELD GAMES
ADVANCED DUNGEONS & DRAGONS™** CLOUDY MOUNTAIN™** CARTRIDGE	■					
ADVANCED DUNGEONS & DRAGONS™** TREASURE OF TARMIN™** CARTRIDGE	□	□	□			■
ADVENTURES OF TRON			■			
AIR RAIDERS			■			
ALL STAR MAJOR LEAGUE BASEBALL	□					
APBA BACKGAMMON	■					
ARMOR AMBUSH			■			
ARMOR BATTLE	■					
ASTROBLAST			■			
ASTROSMASH	■	□				
AUTO RACING	■					
B-17 BOMBER*	■					
BIORHYTHMS		□				
BOMB SQUAD*	■					
BOXING	■					
BUMP 'N' JUMP	□	□	□		□	□
BURGERTIME	■	□	□	□	□	
BUZZ BOMBERS	□					
CHECKERS	■					
CHESS		□				
DARK CAVERN			■			
EXTENDED MICROSOFT BASIC		□				
FILEFORM		□				
FINFORM		■				
FLINTSTONES KEYBOARD FUN ^o	□					
FROG BOG	■					
FROGS AND FLIES			■			
GAME FACTORY ^o	□					
HORSE RACING	■					
IN SEARCH OF THE GOLDEN SKULL			□			
INTERNATIONAL SOCCER			■			
KOOL-AID MAN	□		□			
LAS VEGAS POKER & BLACKJACK	■					
LAS VEGAS ROULETTE	■					
LOCK 'N' CHASE	■	□	■	□	□	
LOCO-MOTION	□		□			
LOGO		□				
MAJOR LEAGUE BASEBALL	■					
MASTERS OF THE UNIVERSE	□		□			□
MATH AND MAZES		□				
MELODY BLASTER†	□					
MIND STRIKE ^o	□					
MISSION X	□		□			
MOTOCROSS	□					
"MR. BASIC MEETS "BITS 'N' BYTES" ^o	□					
MYSTIC CASTLE	■					
NASL SOCCER	■					
NBA BASKETBALL	■					
NFL FOOTBALL	■					
NHL HOCKEY	■					
NIGHT STALKER	■	□		□	□	
NUMBER JUMBLE ^o	□					
PBA BOWLING	■					
PGA GOLF	■					
PINBALL	□					
PROGRAM BUILDER ^o	□					
REVERSI	■	□				
ROCKY AND BULLWINKLE	□		□			
ROYAL DEALER	■					
SCOOBY-DOO'S MAZE CHASE ^o	■					
SEA BATTLE	■	□				
SHARK! SHARK!	■					
SHARP SHOT	■					
SNAFU	■	■				
SONG WRITER†	□					
SPACE ARMADA	■					
SPACE ATTACK			■			
SPACE BATTLE	■					
SPACE HAWK	■					
SPACE SPARTANS*	■					
SPELLING IN SPACE		□				
STAR STRIKE	■		■			
SUB HUNT	■					
SUPER CHALLENGE BASEBALL			■			
SUPER CHALLENGE FOOTBALL			■			
TENNIS	■					
THE ELECTRIC COMPANY MATH FUN	■					
THE ELECTRIC COMPANY WORD FUN	■					
THE JETSON'S WAYS WITH WORDS ^o	□					
THIN ICE	□					
TRIPLE ACTION	■					
TRON DEADLY DISCS	■	■	■			
TRON MAZE-A-TRON	■					
TRON SOLAR SAILER*	■					
USCF CHESS	■					
U.S. SKI TEAM SKIING	■					
UTOPIA	■	■				
VECTRON	■					
WORLD SERIES BASEBALL ^o	□					

* for use with Intellivoice Voice Synthesis Module
o for use with Intellivision Computer Module (Intellivision Computer Keyboard and Computer Adaptor)
† for use with Intellivision Music Synthesizer and Computer Adaptor
■ currently available at retail

** ADVANCED DUNGEONS & DRAGONS, CLOUDY MOUNTAIN, and TREASURE OF TARMIN are trademarks owned by and used under license from TSR Hobbies, Inc. This Cartridge is approved by TSR Hobbies, Inc., the publisher of the 'Fantasy Role-Playing Games' sold under the trademark ADVANCED DUNGEONS & DRAGONS®. © 1982 TSR Hobbies, Inc. All Rights Reserved.

© Mattel Inc. 1982
Printed in U.S.A.